

ADMISSION & EDUCATION TRANSPORT POLICIES FOR 2023-24

Report of the Head of Education and Learning

Please note that the following recommendations are subject to approval by the Cabinet and confirmation under the provisions of the Council's Constitution before taking effect.

1. Note that the admission arrangements were proposed and consulted on for the Local Authority.
2. Approve the recommendations as laid out in [section 2](#)

1. PURPOSE OF REPORT

- 1.1 The Local Authority (Devon LA) has a statutory responsibility to propose, consult on and determine admission arrangements for Community and Voluntary Controlled (VC) schools and co-ordinated admission schemes for the normal round of admissions to all state-funded schools. Consultation in Devon is held ahead of the statutory deadline for consideration by Cabinet. Schools which are their own admissions authority (Foundation, Voluntary Aided, Academies and Free schools, University Technical Colleges and Studio Schools) are responsible for their own arrangements and determined by the governing boards and academy trusts.
- 1.2 Amendments were made to admission arrangements for 2021-22 and 2022-23 following a revision of the Admissions Code, which came into force from 1 September 2021, and renewed guidance from the Department for Education. Specifically, these changes were:
 - a) Adding to the children in care oversubscription priority: children who appear to the admission authority to have been in state care outside England and ceased to be in state care as a result of being adopted;
 - b) Adding a statutory requirement that decisions on in-year admissions application be communicated to parents and carers within 15 school days and with an aim of 10 school days;
 - c) Adding provision to manage applications submitted from overseas or for children of nationalities other than the United Kingdom or the Republic of Ireland.
- 1.3 There have been no further changes to legislation or guidance and so arrangements for 2023-24 are based on the arrangements for 2022-23.
- 1.4 This paper is to report the outcome of the consultation on primary and secondary school admission arrangements for 2023-24 and the co-ordination of primary and secondary school admissions. It also seeks approval to the schemes. Admission to special schools and fee-paying independent schools falls outside the scope of these arrangements.
- 1.5 This paper also recommends Education Transport Policies for 2023-24.

2. RECOMMENDATIONS

2.1 Members are requested to:

- a) approve the Published Admission Numbers for community and VC schools for 2023-24 (see [Appendix One](#))
- b) approve the catchment areas for community and VC schools for 2023-24 with detailed amendments (see [Appendix Two](#) and [Appendix Three](#))
- c) approve the admissions timetable for the next year (see [Appendix Four](#))
- d) determine the normal round co-ordinated admissions scheme for 2023-24 (see [Appendix Five](#))
- e) determine the in-year co-ordinated admissions scheme for 2023-24 (see [Appendix Five](#))
- f) approve the Education Transport Policies for 2023-24 (see [section 6](#))

3. CONSULTATION ON ADMISSION ARRANGEMENTS

- 3.1 Education Authorities have a statutory requirement to consult annually on their admission arrangements and to determine them by the end of February. Devon consulted on the proposed admission arrangements for community and VC schools for which it is the admission authority and on the proposed co-ordinated admission schemes for primary and secondary schools. Where a school converts to academy status after determination, the published admission arrangements remain in place until the next admissions round.
- 3.3 An email was sent to schools at the beginning of November 2021, notifying them that the consultation website was live. Details of the Consultation on the admission arrangements took place from the beginning of November 2021. Consultations were also sent electronically to all neighbouring Local Authorities, Church of England and Roman Catholic Dioceses and other required consultees. The Devon Education Forum has been consulted through reporting to the School Organisation, Capital and Admissions Forum.
- 3.4 The consultation website set out all aspects of the proposed admission arrangements and enabled schools and other consultees to respond to the proposals online via email direct to Devon. Responses were required by 7 January 2022 in order to allow consultees time to respond after a full assessment of those consultations.
- 3.5 An advert was also placed in the Western Morning News in November 2021.
- 3.6 All community and voluntary controlled schools were sent a link to an admissions policy document for the school for 2023-24, drafted on the same lines as those for LA own-admission authority schools.
- 3.7 A letter was sent to each home address where there was a proposal to amend the catchment area for 2023-24. See [Sections 4.5 and 4.6](#).
- 3.7 The number of responses received remains low as Devon's arrangements have been consistent for a number of years with substantive amendments being introduced gradually and with consultation. Feedback from schools suggests that they are largely content with matters such as oversubscription criteria, Published Admission Numbers, catchment areas and the application process. Devon works closely with Diocese, headteacher and governor representatives throughout the year, discussing policy matters. A number of responses were received with regard to specific local admissions

issues, detailed at www.devon.gov.uk/admissionarrangements. This is in common with neighbouring Local Authorities.

- 3.8 The Admissions Team works collaboratively with all schools/Trusts who are their own Admissions Authority to ensure their arrangements are compliant with the Admissions Code

4. CO-ORDINATED ADMISSION ARRANGEMENTS 2023-24

- 4.1 Devon is required under the School Admissions Code to co-ordinate all normal round admissions to state-funded schools, with the exception of new Free Schools where the Department for Education's instruction is to not coordinate in the first year of opening. Devon has consulted annually on co-ordinated admissions schemes for primary and secondary schools; the proposed scheme for 2023-24 was a combined scheme for the Normal Round of Admissions into all state-funded schools. Normal round is the first opportunity to be admitted into any school, such as at the beginning of Reception, Year 3 for junior schools and Year 7 for secondary schools. It also includes Year 7 for all-through schools. It brought forward the arrangements from the previous academic year with some amendments, detailed at [Appendix Five](#). On average, the co-ordinated schemes manage 7,500 primary admissions, 7,000 secondary admissions and 6,500 in-year admissions each year.
- 4.2 Devon's arrangements oversaw 14,474 applications for Devon-resident children for the 2021-22 normal round of admissions for all schools and academies. The percentage of children who received a place at the school preferred by the parent remains significantly above the most recent national averages¹.

	2019-20		2020-21		2021-22	
	Nationally	Devon	Nationally	Devon	Nationally*	Devon
Secondary						
Applications	604,500	7346	600,352	7475		7419
First preference offered	80.9%	94%	82.2%	92.6%		91.2%
Any preference offered	93%	98%	95.6%	97.4%		97.6%
Primary						
Applications	609,000	7272	612,146	7581		7055
First preference offered	90.6%	97%	90.2%	94.6%		97.6%
Any preference offered	97.5%	99%	97.8%	98.3%		99.6%

*The data for national allocations for 2021 have not yet been released.

- 4.3 Local Authorities are not required to co-ordinate in-year admissions to all state-funded schools. Devon manages in-year applications for community and VC schools and extends this facility to all state-funded mainstream schools. The purpose is to enable parents to apply for one or more schools at the same time and promote a fair, transparent and lawful admissions process for all children in the county. By doing so, Devon seeks to minimise instances where children, in particular vulnerable children, are missing education and to ensure compliance with the School Admissions Code and School Admissions Appeals Code. Devon has consulted annually on an in-year co-ordinated admissions scheme; the proposed scheme for 2023-24 was brought forward from the previous academic year. As an integral part of a fair, legal and transparent admissions

¹ Taken from <https://www.gov.uk/government/statistics/secondary-and-primary-school-application-and-offers-2018> and <https://www.gov.uk/government/statistics/secondary-and-primary-school-application-and-offers-2020>.

service, Devon-wide in-year co-ordination forms a part of the Admissions Traded Service with all schools.

- 4.4 Published Admission Numbers (PANs) were proposed for community and VC schools, taking into account the accommodation available, expected local demand, sensible organisation, a strategic overview of the number of places in an area, the constraints of Key Stage One Class Size Legislation and the flexibility to increase PANs where this becomes necessary. The proposed PANs are listed at [Appendix One](#) and can be found in the individual admissions policy document for each school at <http://devon.cc/schoolpolicy>
- 4.5 The proposed catchment areas for community and VC schools were brought forward from the previous academic year with minor amendments to the boundaries of the following schools:

Abbotskerswell Primary School
Berry Pomeroy Parochial Church of England Primary School
Bishopsteignton School
Bradley Barton Primary School and Nursery Unit
Chudleigh Church of England Community Primary School
Cornwood Church of England Primary School
Decoy Primary School
Denbury Primary School
Haytor View Community Primary School
Highweek Community Primary and Nursery School
Kingsbridge Community Primary School
Kingskerswell Church of England Primary School
Ladysmith Infant and Nursery School
Ladysmith Junior School
Loddiswell Primary School
Malborough with South Huish Church of England Primary School
Modbury Primary School
Shaugh Prior Primary School
St Michael's Church of England Primary School, Kingsteignton
Stoke Hill Infant and Nursery School
Stoke Hill Junior School
Stokeinteignhead School
Stokenham Area Primary School
The Grove Primary School

A map for each school showing the 2022 determined boundary and the recommended 2023 boundary is included at [Appendix Two](#). These changes have been required due to the updating of area maps through digital technology and also to reflect the impact of house building or new roads.

The impact of amendments to the map boundaries is included at [Appendix Three](#).

The purpose of the amendments was to remove instances where the boundaries cross through fields or individual properties, reducing ambiguity for communities, the local authority or schools themselves. Amendments were kept to a minimum and allow boundaries to follow recognisable geographical features such as roads and footpaths, the edges of fields and wooded areas, streams and watercourses and the boundaries of properties.

- 4.6 Complimentary amendments were drafted for the following own admission authority schools so that catchment areas for the named schools in the South Hams and Teignbridge areas do not overlap as a consequence of the exercise:

Aveton Gifford CofE Primary School
Bickleigh Down Church of England Primary School
Blackawton Primary School
Blackpool Church of England Primary School
Broadhempston Village Primary School
Charleton Church of England Academy
Chudleigh Knighton Church of England Primary School
Dartington Church of England Academy
Dartmouth Academy (primary phase)
Diptford Parochial Church of England Primary School
East Allington Primary School
Ermington Primary School
Harbertonford Church of England Primary School
Holbeton Primary School
Ipplepen Primary School
Landscope Church of England Primary School
Manor Primary School, Ivybridge
Marldon Church of England Primary School
Newton Ferrers Church of England Primary School
Rydon Primary School
Salcombe Church of England Primary School
Shaldon Primary School
Sherford Vale School
South Brent Primary School
St Mary's Church of England Primary School, Brixton
Stoke Fleming Community Primary School
Stoke Gabriel Primary School
Stowford School
Teign School
Teignmouth Community School, Exeter Road
Totnes St John's Church of England Primary School
Ugborough Primary School
Wembury Primary School
West Alvington Church of England Academy
Wolborough Church of England (Aided) Nursery and Primary School
Woodlands Park Primary School
Yealmpton Primary School

The catchment areas for secondary schools are made up of the catchment areas of feeder primary schools. The following own-admission authority secondary schools are affected by the proposals:

Coombeshead Academy
Dartmouth Academy (secondary phase)
Ivybridge Community College
King Edward VI Community College
Kingsbridge Community College
Newton Abbot College
South Dartmoor Community College
Tavistock College
Teign School
Teignmouth Community School, Exeter Road

The responsibility for determining the admission arrangements for the schools listed at section 4.6 lies with the governing bodies and academy trusts for those schools.

Officers are in continuing discussions to support own-admission authority schools regarding their policies for 2023-24, which also need to be determined by the end of February. This occasionally includes challenge to ensure compliance with the School Admissions Code.

- 4.7 The primary and secondary co-ordination schemes have statutory deadlines. They must be determined by the end of February ahead of applications in September (2022) for admission the following September (2023). This has been taken into account in a timetable for the admissions process which is detailed at [Appendix Four](#).

5. OWN ADMISSION AUTHORITY SCHOOLS

- 5.1 Many schools in Devon are responsible for their own admissions policy and decisions in response to admissions applications. These are academy, free, studio, voluntary aided and foundation schools and university technical colleges (UTCs). At the time of writing, there were²:

Academy schools	179
Foundation schools	36
Free schools	10
Studio schools	1
University Technical College	1
Voluntary Aided	27
	254

There remain a number of schools for which Devon is the admissions authority:

Community	70
Voluntary Controlled	30
	100

- 5.2 All LAs have a responsibility under the School Admissions Code to collate and publish the admission arrangements of all schools, including own admission authority schools. Devon meets this requirement by publishing a copy of all policies at <http://devon.cc/schoolpolicy> and reviews the policies of all schools to ensure that they are legally compliant. Where the DCC Admissions Service identifies that any part of a school's admission arrangements may be unlawful, it will raise the issue with the school's admissions authority and seek amendments to make the arrangements lawful. Where agreement is not reached, a decision on whether to formally object to the arrangements to the Office of the Schools' Adjudicator will be made and also, where appropriate, representations are made to the Regional School Commissioner and Education & Skills Funding Agency; to date this has not been necessary.
- 5.3 The first stage of the compliance process is to work closely with own admission-authority schools with their admissions policies. Where amendments are made to policies for community and VC schools, they are recommended to all own-admission authority

² School types data is taken from the Department for Education's *Get Information About Schools* website for Devon schools and academies.

schools. In most cases, Devon formulates the policy for own-admission authority schools to consider and approve. Support for own-admission authority schools has included scrutiny, advice and challenge as necessary.

6. EDUCATION TRAVEL ARRANGEMENTS

- 6.1 In previous years, the education transport policy has been included in the admissions consultation and Members have been requested to consider them at the same time. The arrangements proposed for 2023-24 for statutory age children and Post-16 students are those previously determined for 2022-23.
- 6.2 There are no substantive amendments to the education transport policies. Financial costs and charges will be kept under constant review.

7 FINANCIAL CONSIDERATIONS

- 7.1 There are no direct financial considerations of this report.

8 SUSTAINABILITY CONSIDERATIONS

- 8.1 The admissions policy supports the principle of providing local places at local schools.

9 EQUALITY CONSIDERATIONS

- 9.1 Equality of access to education opportunities is a fundamental feature of school admission arrangements and the education transport policies. All policies for consideration have been subject to an Equality Impact Needs Assessment, at www.devon.gov.uk/admissionarrangements.
- 9.2 Increasingly in a more autonomous school system, all LAs will need to ensure schools comply with the Admissions Code and be prepared to challenge practice that is neither legal nor inclusive.

10 LEGAL CONSIDERATIONS

- 10.1 School admission arrangements are a statutory function of Devon County Council. Setting fair, transparent and legal co-ordinated admission arrangements ensures that Devon meets its duty and enables parents, schools and other interested parties to have confidence in them.
- 10.2 The admission arrangements have been proposed and the subject of consultation under requirements of the statutory School Admissions Code 2021. Arrangements must be determined by Devon by 28 February and must be compliant with the statutory requirements of the Code. The amendments to policies are compliant with the Code.

11 RISK MANAGEMENT CONSIDERATIONS

- 11.1 The key risk is that admission arrangements are not determined by the statutory date of 28 February. This would mean that Devon County Council was not compliant with the requirements of the Code. It would be liable to censure from the Department for Education and the Office of the Schools' Adjudicator (OSA).
- 11.2 By not determining compliant arrangements, Devon parents and schools would be a) unable to plan effectively for the next school admissions round in 2023-24, applications

for which will open in the autumn 2022 or b) to effectively plan for in-year admissions during 2023-24. This would be a failure of the Education Authority to formulate and manage a fair and transparent admissions system. Furthermore, Devon's neighbours would have cause for concern that Devon may not meet its duty to co-ordinate arrangements for admissions across local authority boundaries. Action on the recommendations addresses this risk.

11.3 During restrictions in place during the Covid-19 pandemic, the risk of children not accessing appropriate education has been managed by the Admissions Service working alongside other teams within Education and Learning. The LA has continued its work through the usual School Admissions annual cycle on a "business as usual" basis during the restrictions under Covid-19. All statutory deadlines have been met – consultation and determination of policies, application windows for normal round admission into schools and appeals have been scheduled within the required timescales. The allocation of in-year admission places has worked within Department for Education guidance and allowed for vulnerable and key worker children to access new schools as necessary for continued education on site while other children have been offered remote learning by their schools.

11.4 Eligibility to transport to and from school has continued to be managed by the Transport Co-ordination Service which has worked to reduce the risk of transmission among passengers and vehicle operators. Those children who have been able to access on-site education have had continued provision with all concerned introducing processes to socially distance as far as possible and to initiate enhanced cleaning schedules.

12. CONCLUSION

12.1 Devon County Council has a broad and constantly changing role in school admissions with a priority for ensuring timely access to statutory aged education.

The recommendations in this paper will ensure Devon County Council meets its statutory responsibilities in respect of school admissions as well as this broader role in supporting children and young people.

Dawn Stabb
Head for Education and Learning

ELECTORAL DIVISION: All

Cabinet Member for Children Services and Schools: Councillor Andrew Leadbetter

Contact for enquiries: Andrew Brent, Senior Policy Officer 01392 383000

Local Government Act 1972. Background Papers:

Appendix One – Proposed Published Admission Numbers for Community and Voluntary Controlled schools

Published Admission Numbers can also be viewed as part of each school's admissions policy for each academic year, published at <http://devon.cc/schoolpolicy>

DfE number	Type	School name	PAN 2022	PAN 2023	recommended changes for 2023
2400	C	Abbotskerswell Primary School	15	15	
2201	C	Ashwater Primary School	8	8	
2206	C	Beaford Community Primary & Nursery School	15	15	
3053	VC	Berrynarbor Church of England Primary School	12	12	
3101	VC	Berry Pomeroy Church of England Primary School	15	15	map amendment
2210	C	Bishops Nympton Primary School	10	10	
2402	C	Bishopsteignton School	30	30	map amendment
2717	C	Bolham Community Primary School	16	16	
2404	C	Bovey Tracey Primary School	40	40	
2002	C	Bow Community Primary School	20	20	
2472	C	Bradley Barton Primary School and Nursery Unit	60	60	map amendment
3001	VC	Brampford Speke Church of England Primary School	10	10	
3002	VC	Branscombe Church of England Primary School	10	10	
3003	VC	Broadhembury Church of England Primary School	8	8	
3004	VC	Burlescombe Church of England Primary School	12	12	
2476	C	Canada Hill Community Primary School	45	45	
2007	C	Cheriton Fitzpaine Primary School	15	15	
3105	VC	Chudleigh Church of England Community Primary School	60	60	
3777	C	Clyst Heath Nursey and Community Primary School	45	45	
2009	C	Clyst St Mary Primary School	30	30	
3152	VC	Cornwood Church of England Primary School	15	15	map amendment
2025	C	Countess Wear Community School	45	45	
2015	C	Culmstock Primary School	20	20	
2431	C	Decoy Primary School	60	60	map amendment
2416	C	Denbury Primary School	17	17	map amendment
2223	C	East Anstey Primary School	7	7	

Appendix One – Proposed Published Admission Numbers for Community and Voluntary Controlled schools

2207	C	East-The-Water Community Primary School	60	60	
2420	C	Exminster Community Primary	60	60	
3059	VC	Georgeham Church of England (VC) Primary School	15	15	
3060	VC	Goodleigh Church of England Primary School	10	10	
3061	VC	Great Torrington Bluecoat Church of England Primary School	75	75	
2604	C	Gulworthy Primary School	12	10	to reduce PAN from 12 to 10
2228	C	Halwill Community Primary School	15	15	
2605	C	Hatherleigh Community Primary School	30	30	
3779	C	Haytor View Community Primary School	30	30	map amendment
2012	C	Hayward's Primary School	60	60	
2448	C	Hazeldown School	60	60	
			60	45	school response to consultation to reduce PAN
2432	C	Highweek Community Primary and Nursery School			
3063	VC	Holsworthy Church of England Primary School	45	45	
2048	C	Honiton Primary School	60	60	
2231	C	Horwood and Newton Tracey Community Primary School	14	14	
3065	VC	Ilfracombe Church of England Junior School	105	105	
2232	C	Ilfracombe Infant and Nursery School	120	120	
3013	VC	Kentisbeare Church of England Primary School	25	25	
2234	C	Kentisbury Primary School	8	8	
2050	C	Kilmington Primary School	15	15	
2425	C	Kingsbridge Community Primary School	60	60	
3112	VC	Kingskerswell Church of England Primary School	60	60	map amendment
2026	C	Ladysmith Infant and Nursery School	90	90	map amendment
2027	C	Ladysmith Junior School	90	90	map amendment
3154	VC	Lamerton Church of England Voluntary Controlled Primary School	8	8	
2079	C	Landscore Primary School	60	60	
2237	C	Langtree Community School and Nursery Unit	12	12	
2612	C	Lifton Community Primary School	25	25	
3028	VC	Littleham Church of England Primary School	30	30	
2428	C	Loddiswell Primary School	15	15	map amendment

Appendix One – Proposed Published Admission Numbers for Community and Voluntary Controlled schools

3014	VC	Lympstone Church of England Primary School	30	30	
3114	VC	Malborough with South Huish Church of England Primary School	15	15	map amendment
2622	C	Mary Tavy and Brentor Community Primary School	15	15	
2614	C	Milton Abbot School	15	15	
2715	C	Modbury Primary School	30	30	map amendment
2239	C	Monkleigh Primary School	15	15	
2054	C	Newton Poppleford Primary School	30	30	
2055	C	Newton St Cyres Primary School	20	20	
2029	C	Newtown Primary School	30	30	
3015	VC	Offwell Church of England Primary School	17	17	
3066	VC	Parracombe Church of England Primary School	8	8	
3016	VC	Payhembury Church of England Primary School	15	15	
2205	C	Pilton Infants' School	60	60	
3017	VC	Plymtree Church of England Primary School	15	15	
2059	C	Sandford School	30	30	
2060	C	Seaton Primary School	60	60	
2618	C	Shaugh Prior Primary School	10	10	map amendment
2243	C	Shebbear Community School	10	10	
2244	C	Shirwell Community Primary School	8	8	
2062	C	Shute Community Primary School	12	12	
4011	C	Sidmouth College	150	150	
			Yr 12: 10	Yr 12: 10	
3022	VC	Silverton Church of England Primary School	20	20	
2245	C	South Molton Community Primary School	45	45	
2242	C	St Giles-on-the-Heath Community School	15	15	
3069	VC	St Mary's Church of England Primary School, Bideford	60	60	
3128	VC	St Michael's Church of England Primary School	60	60	map amendment
3024	VC	Stoke Canon Church of England Primary School and Pre-school	20	20	
2033	C	Stoke Hill Infant and Nursery School	90	90	map amendment
2034	C	Stoke Hill Junior School	90	90	map amendment
2445	C	Stokeinteignhead School	15	15	

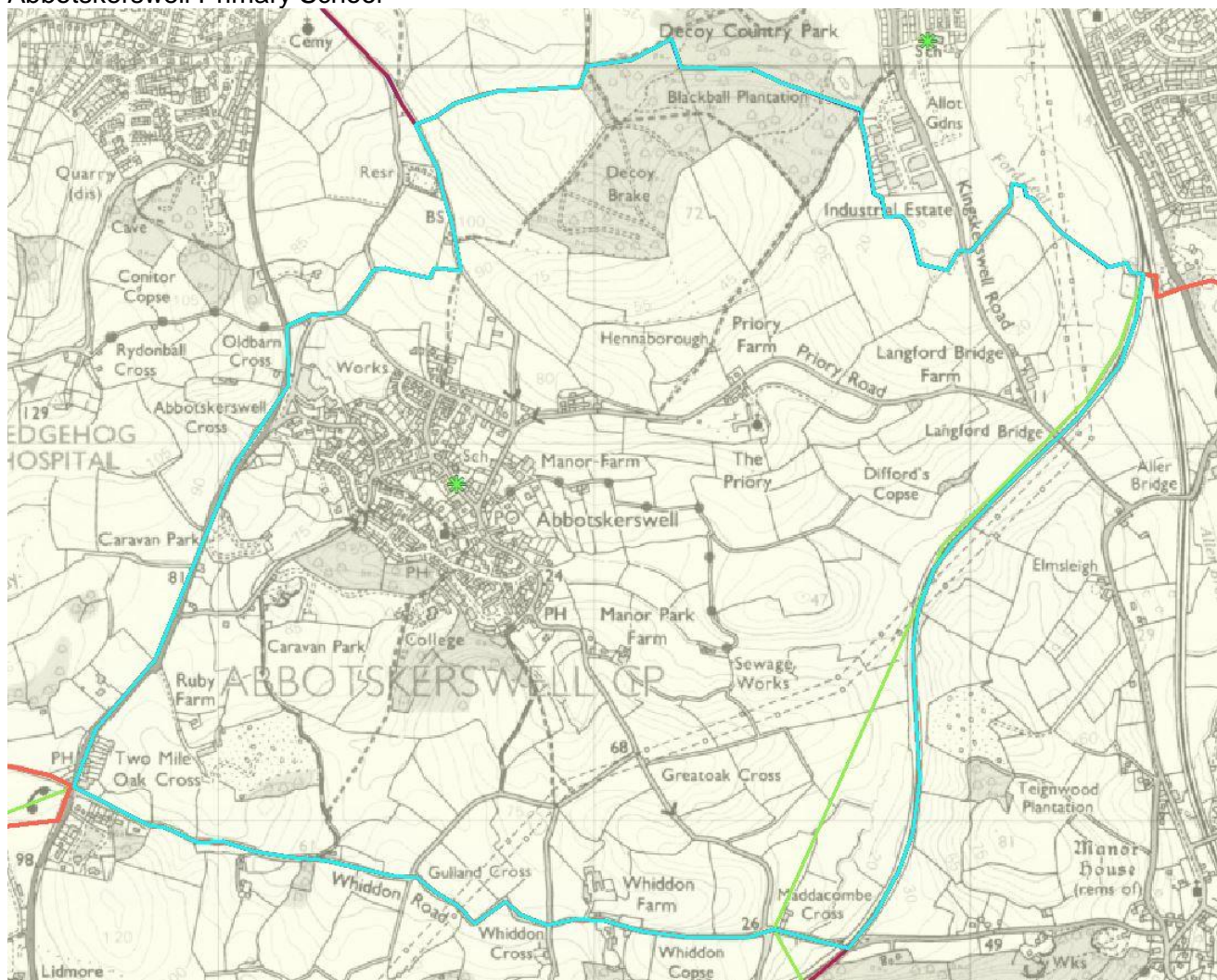
Appendix One – Proposed Published Admission Numbers for Community and Voluntary Controlled schools

2446	C	Stokenham Area Primary School	30	30	map amendment
2609	C	The Erme Primary School	25	25	
2461	C	The Grove Primary School	45	45	map amendment
2090	C	The Topsham School	30	30	
3025	VC	Thorverton Church of England Primary School	15	15	
3026	VC	Uplowman Church of England Primary School	8	8	
2073	C	Upottery Primary School	15	15	
2209	C	West Croft School	90	90	
2249	C	West Down School	15	15	
2074	C	Whimble Primary School	20	20	
2075	C	Willand School	60	60	
2724	C	Willowbrook School	60	60	
3011	VC	Withycombe Raleigh Church of England Primary School	90	90	
3375	C	Wynstream School	60	60	

Appendix Two – Recommended catchment area amendments for Community and Voluntary Controlled schools

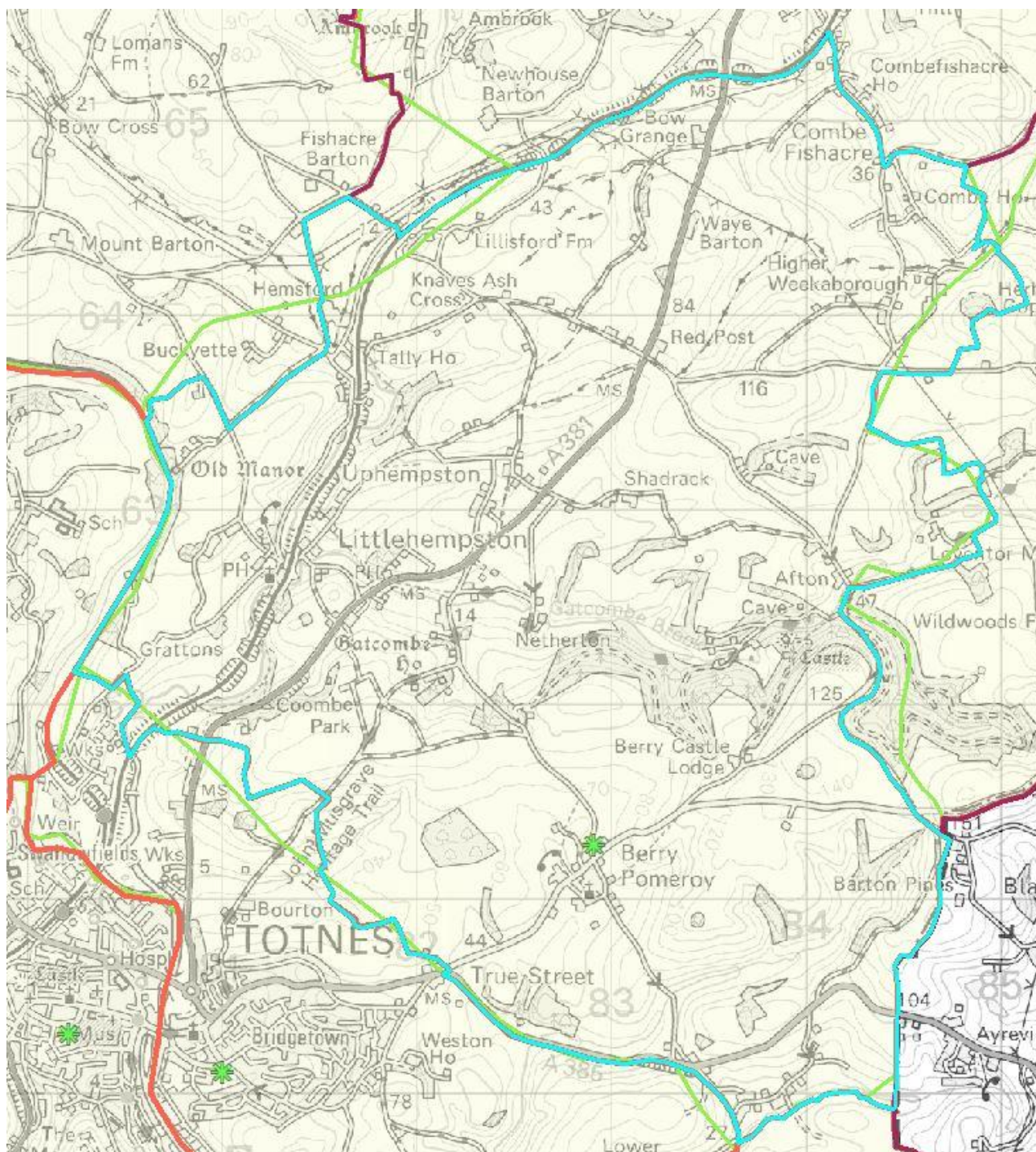
Below are maps showing the determined catchment boundary for 2022-23 in green and the recommended boundaries for 2023 in blue. Maps are screenshots from the Devon school area mapping system at [DCC School Designation Areas - 2023-2024 \(devon.gov.uk\)](https://devon.gov.uk/dcc-school-designation-areas-2023-2024)

Abbotskerswell Primary School



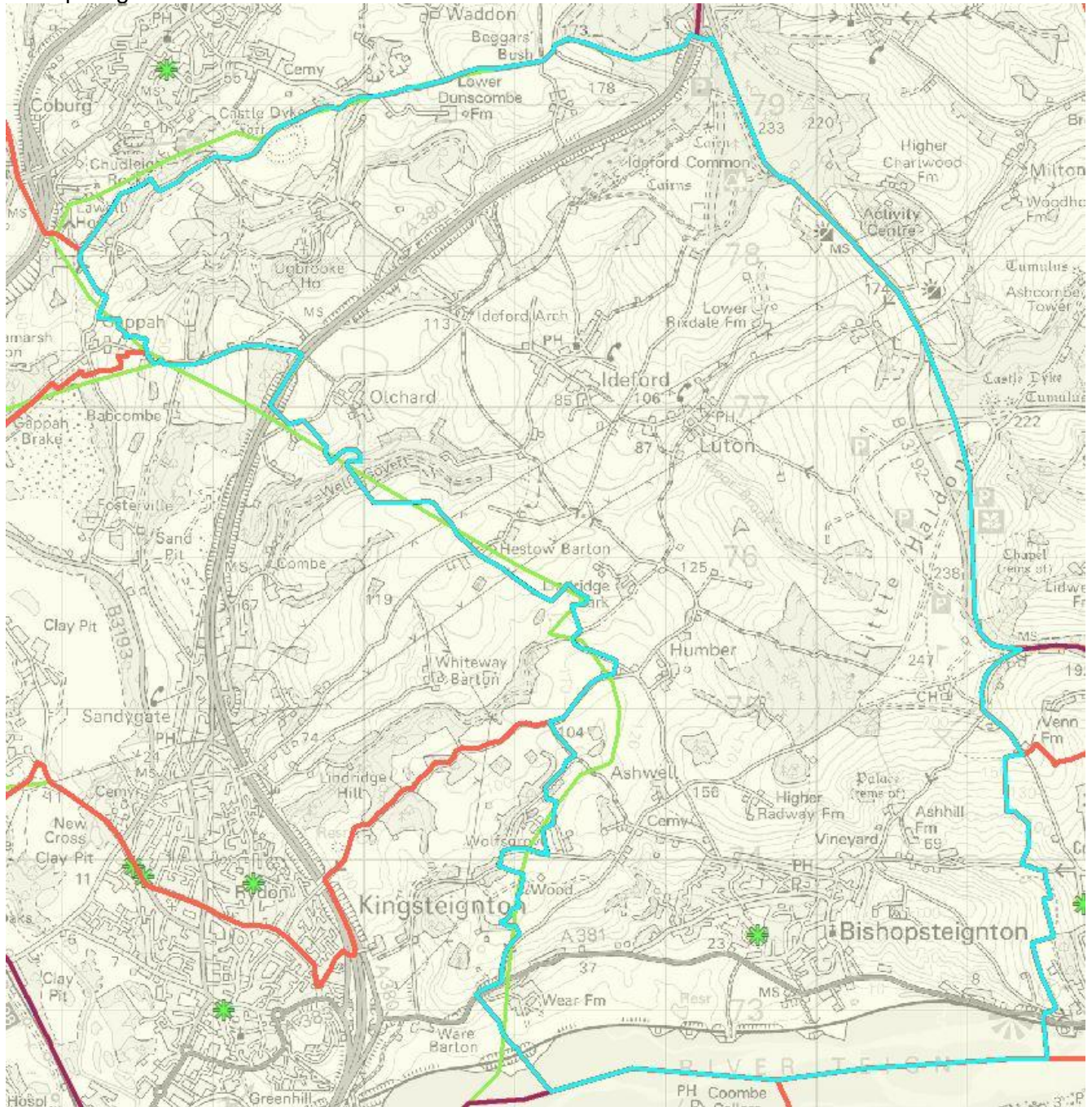
Appendix Two – Recommended catchment area amendments for Community and Voluntary Controlled schools

Berry Pomeroy Parochial Church of England Primary School



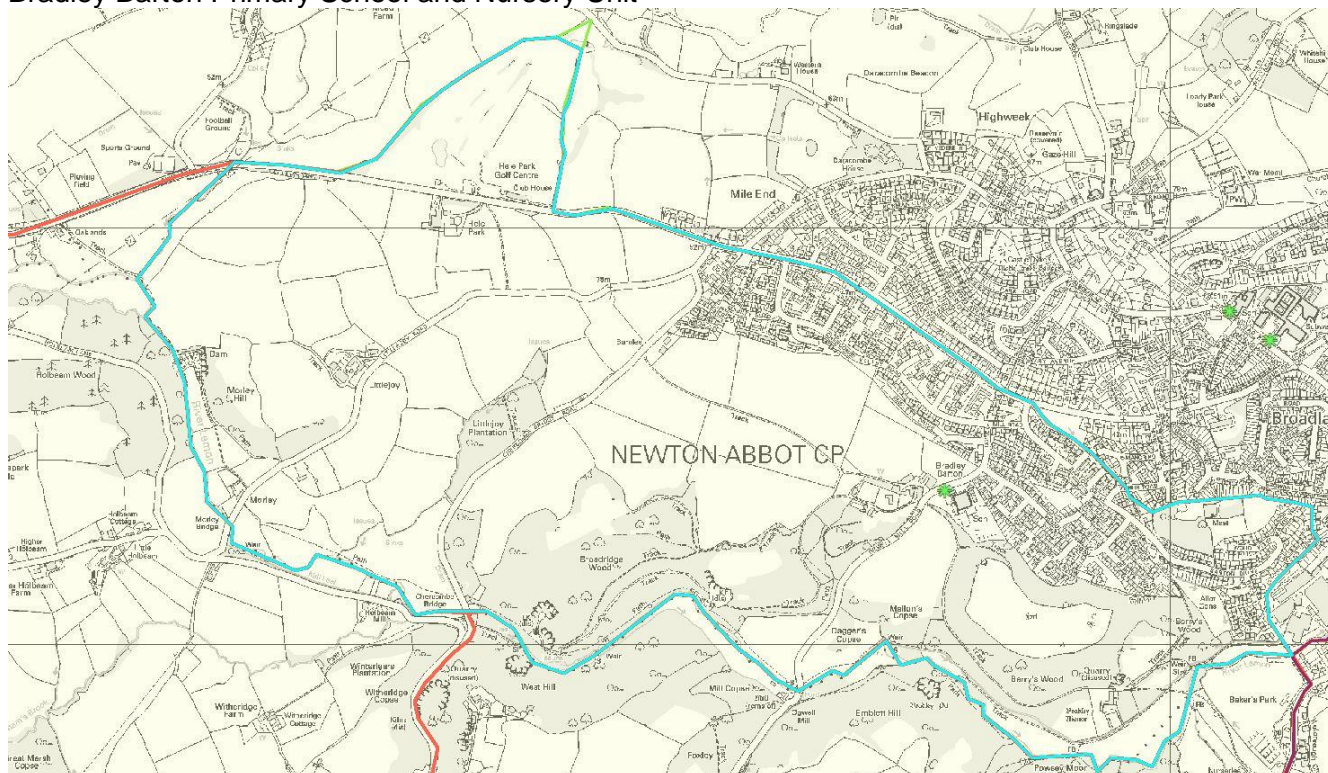
Appendix Two – Recommended catchment area amendments for Community and Voluntary Controlled schools

Bishopsteignton School



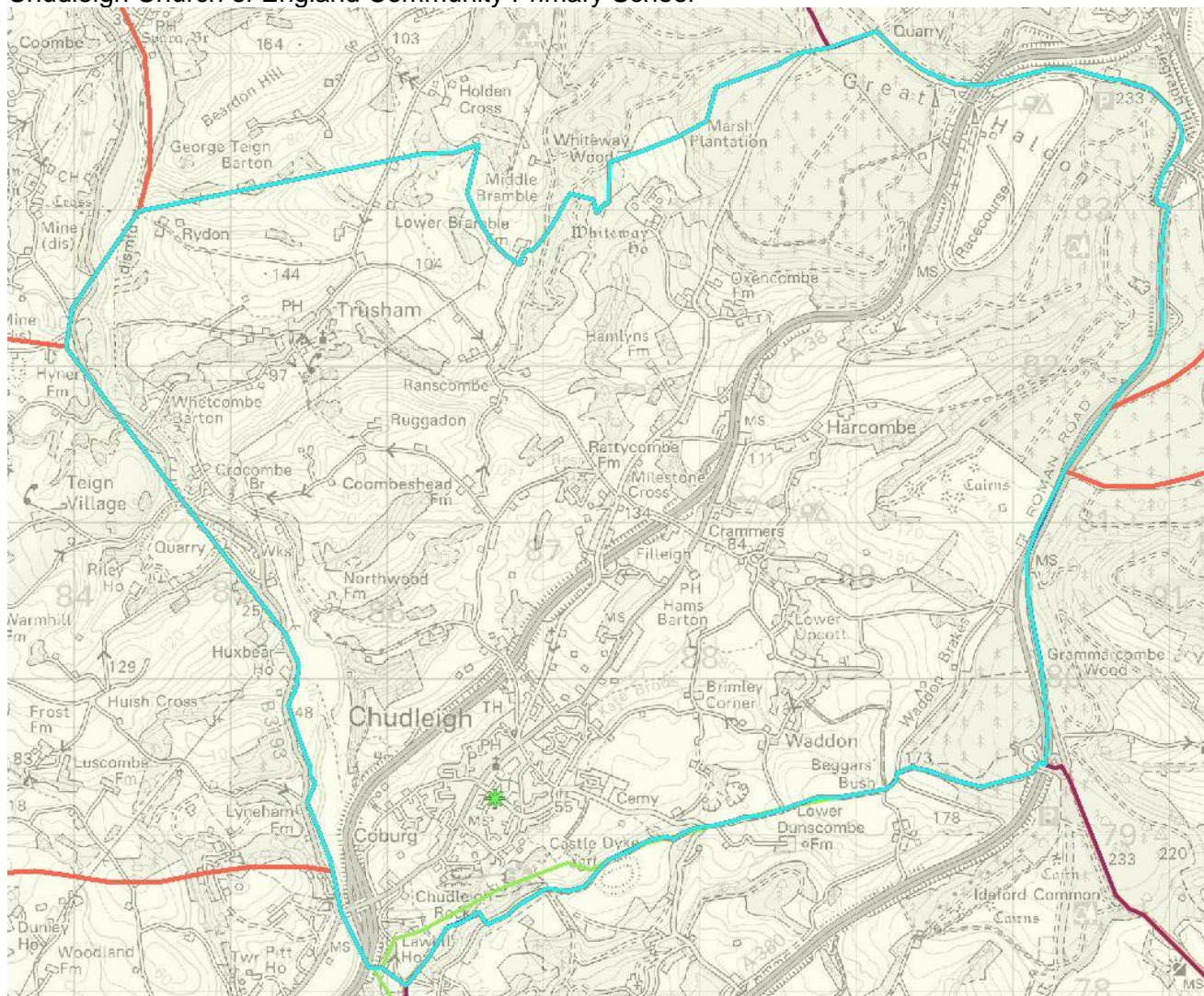
Appendix Two – Recommended catchment area amendments for Community and Voluntary Controlled schools

Bradley Barton Primary School and Nursery Unit



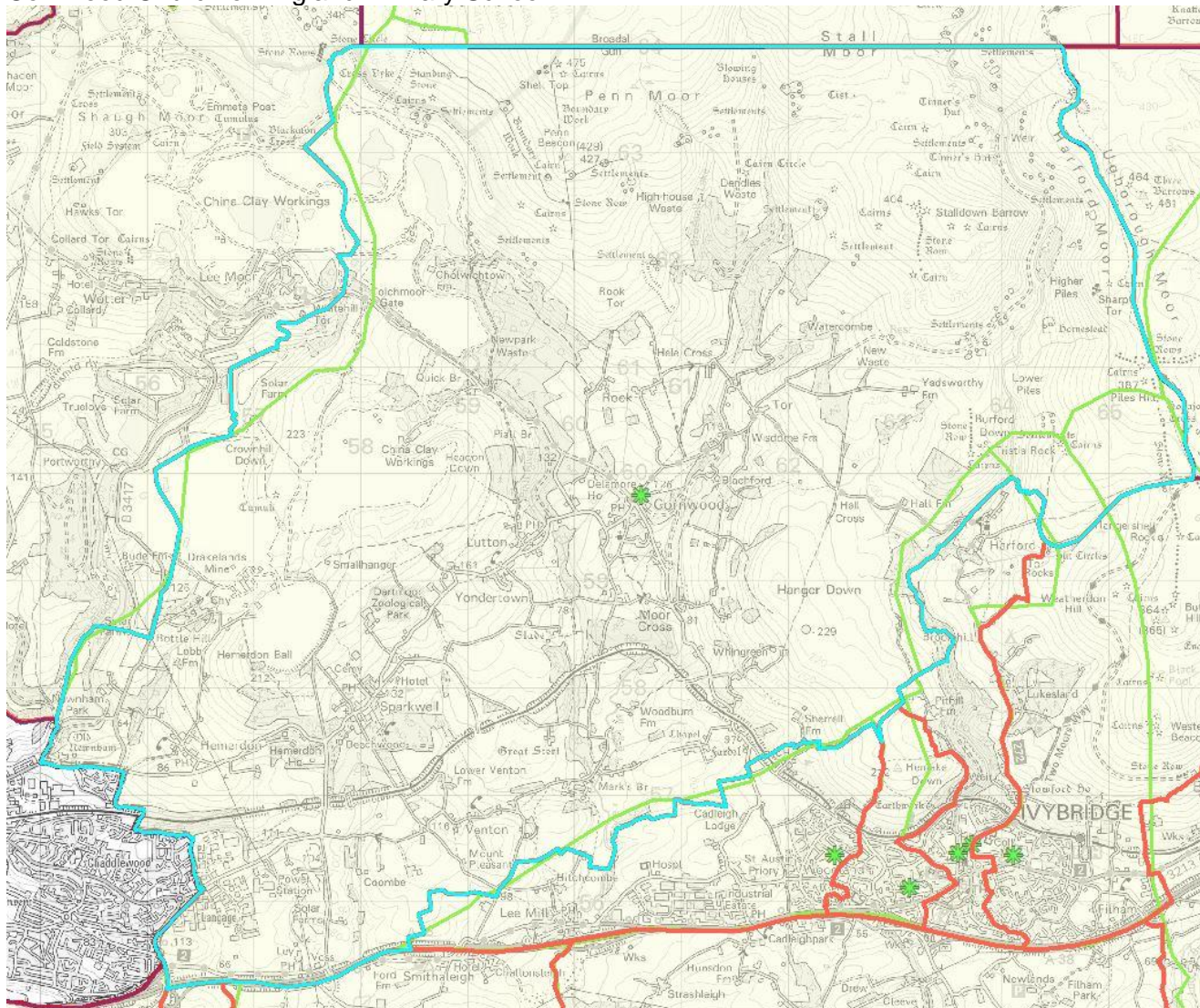
Appendix Two – Recommended catchment area amendments for Community and Voluntary Controlled schools

Chudleigh Church of England Community Primary School



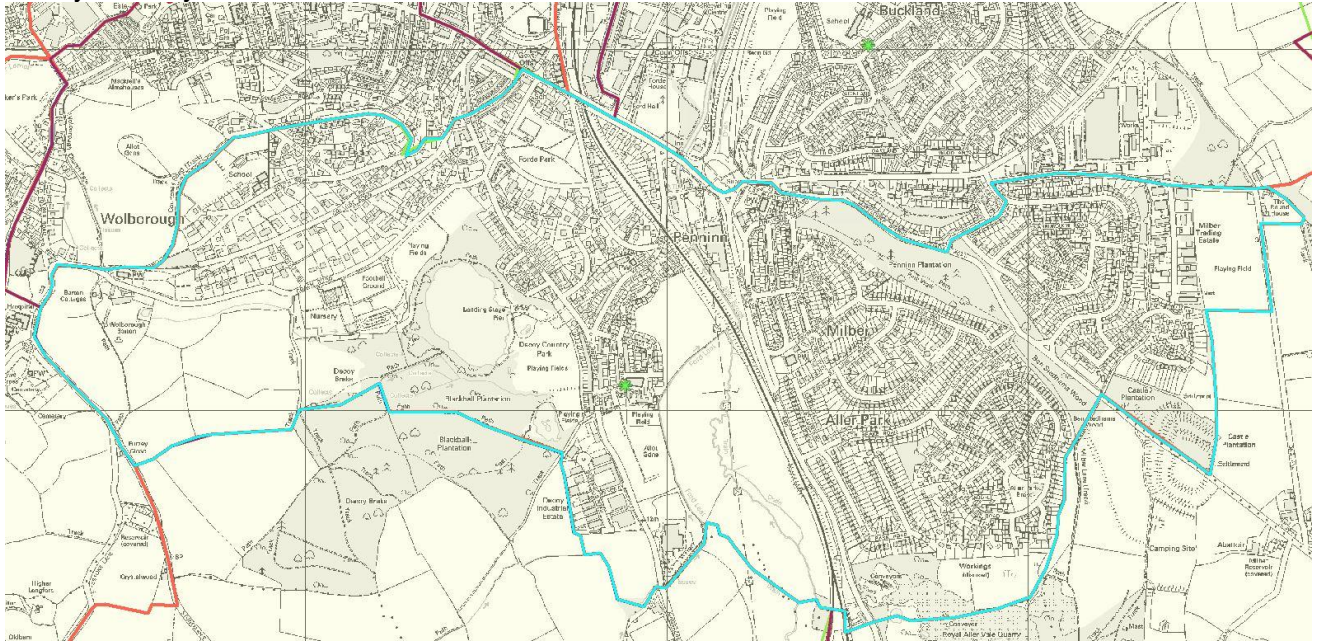
Appendix Two – Recommended catchment area amendments for Community and Voluntary Controlled schools

Cornwood Church of England Primary School



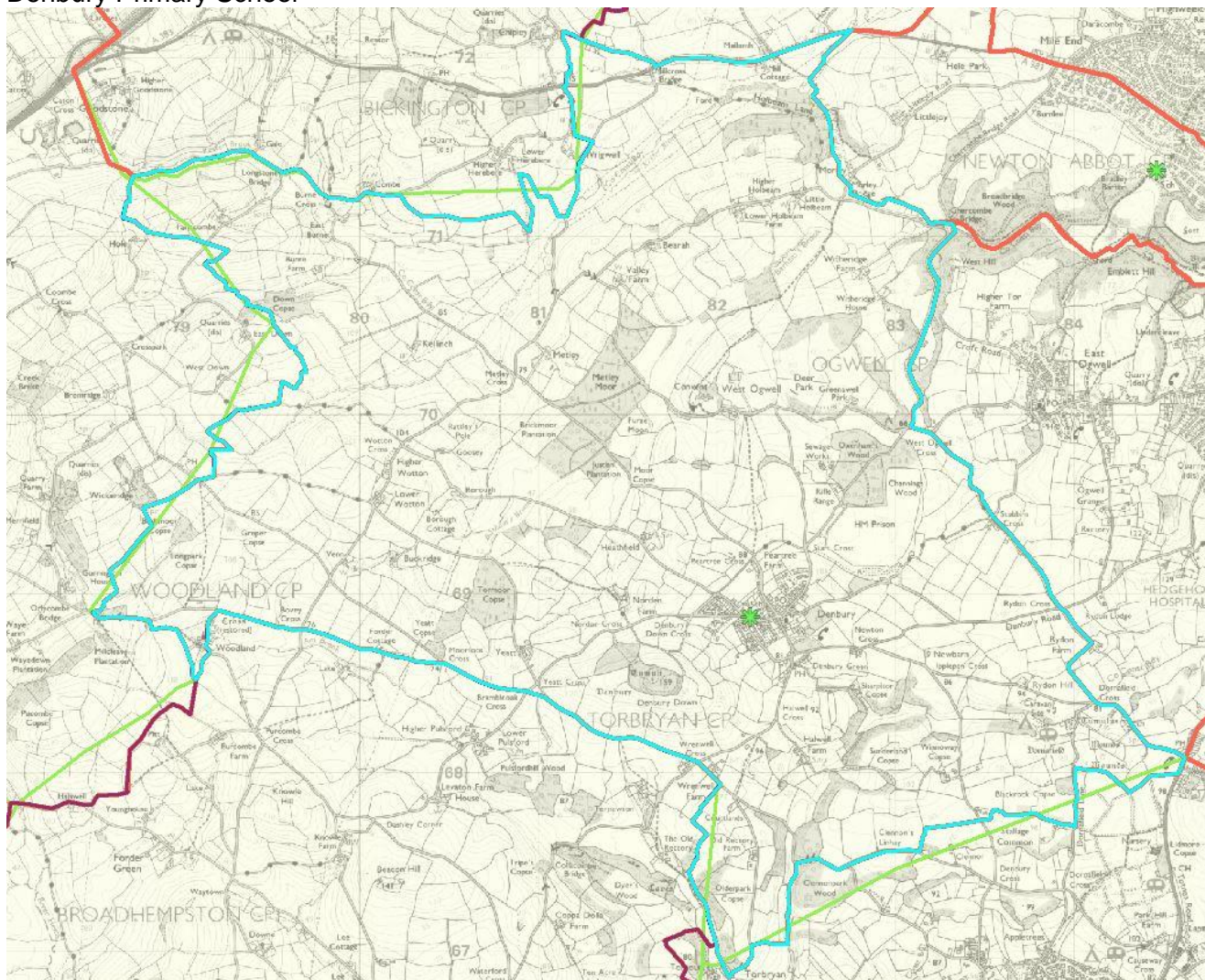
Appendix Two – Recommended catchment area amendments for Community and Voluntary Controlled schools

Decoy Primary School



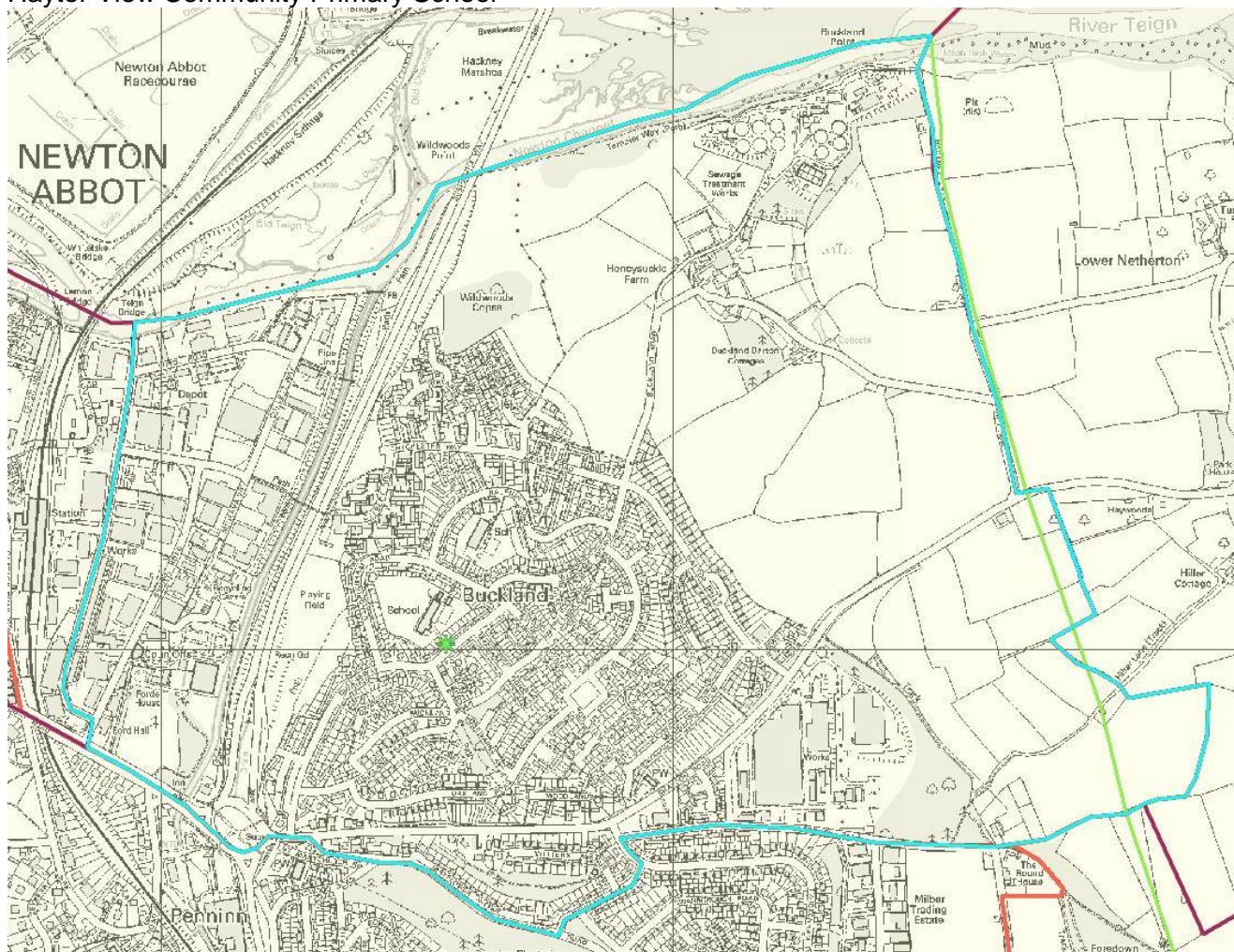
Appendix Two – Recommended catchment area amendments for Community and Voluntary Controlled schools

Denbury Primary School



Appendix Two – Recommended catchment area amendments for Community and Voluntary Controlled schools

Haytor View Community Primary School



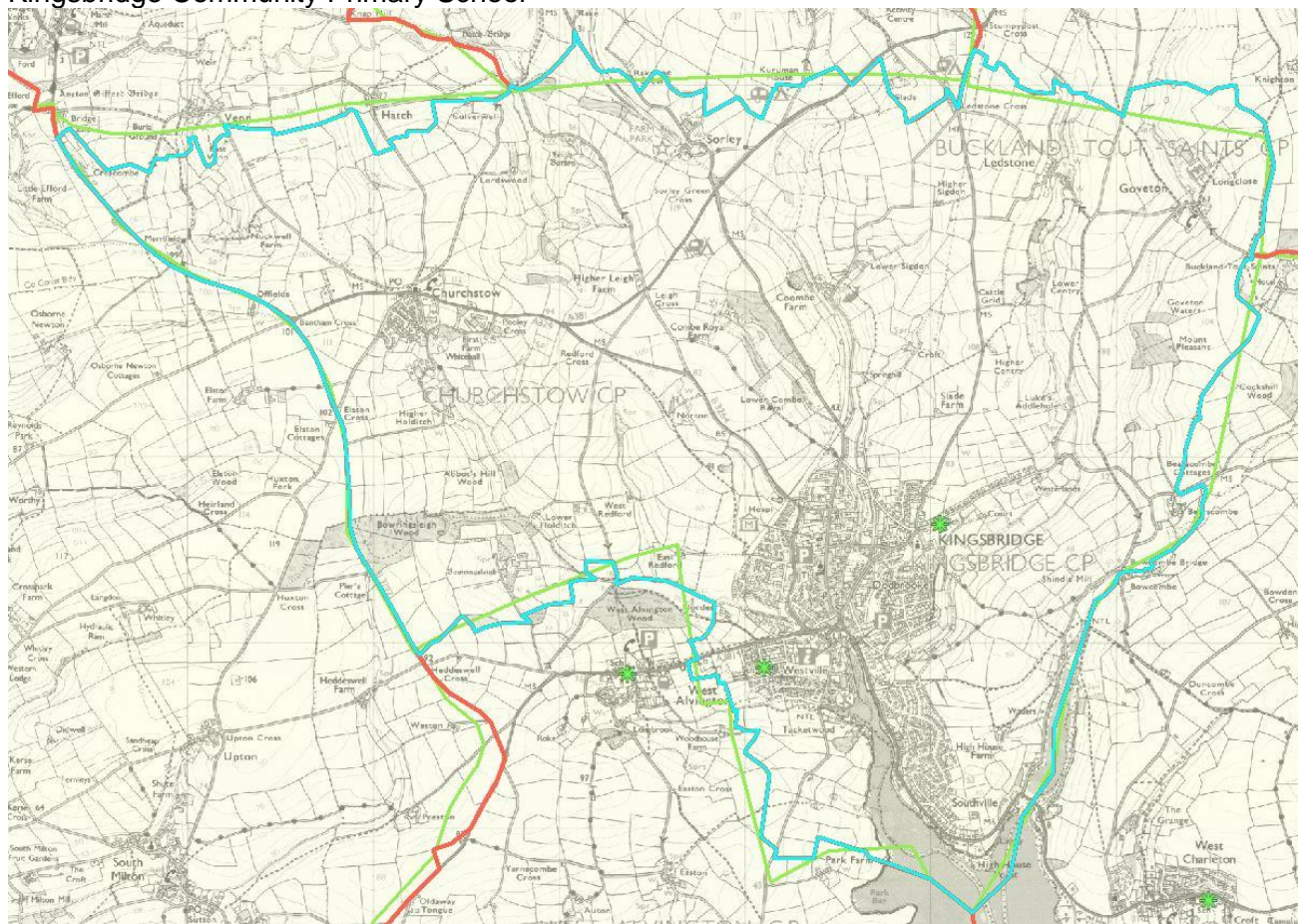
Appendix Two – Recommended catchment area amendments for Community and Voluntary Controlled schools

Highweek Community Primary and Nursery School



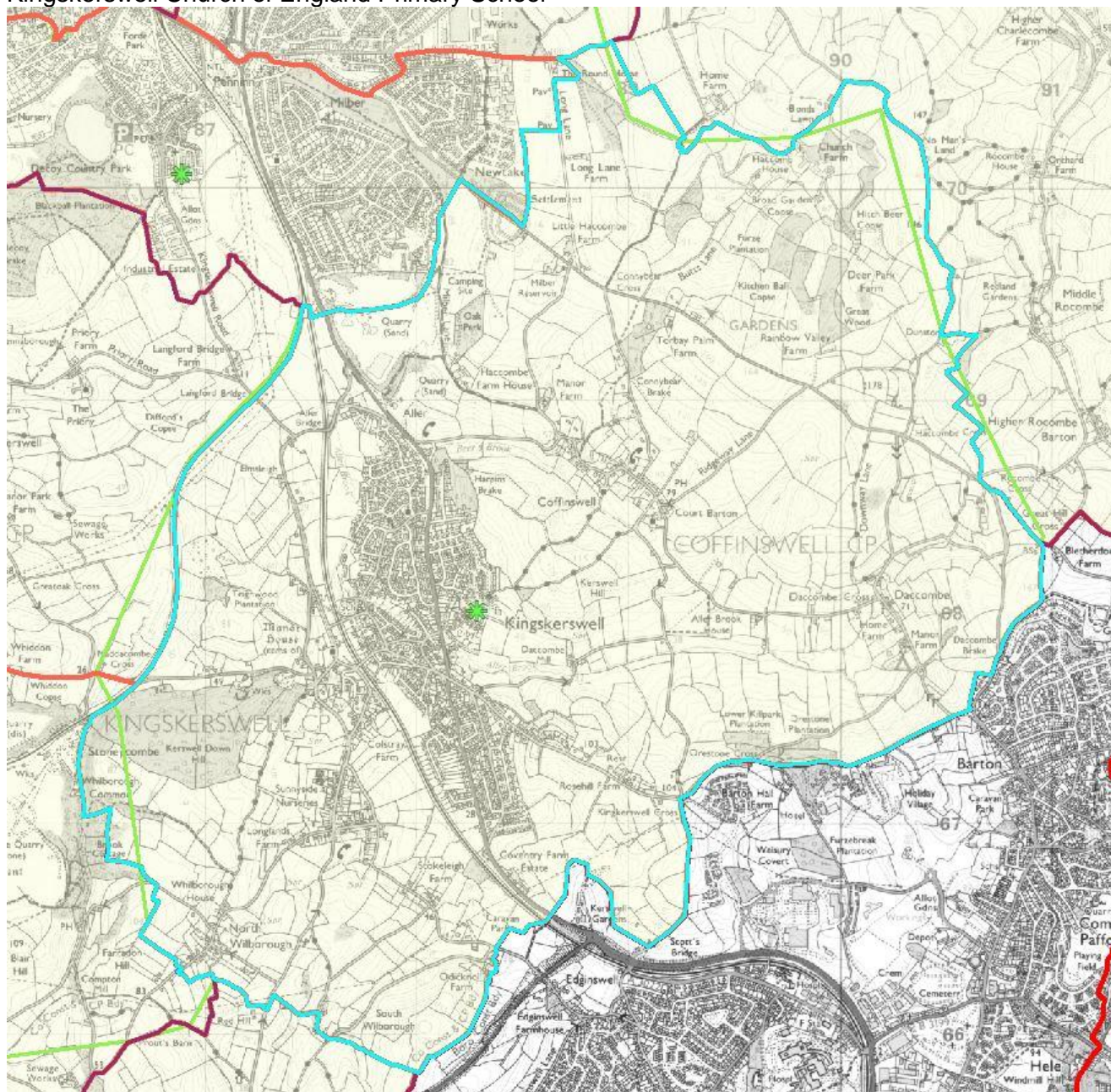
Appendix Two – Recommended catchment area amendments for Community and Voluntary Controlled schools

Kingsbridge Community Primary School



Appendix Two – Recommended catchment area amendments for Community and Voluntary Controlled schools

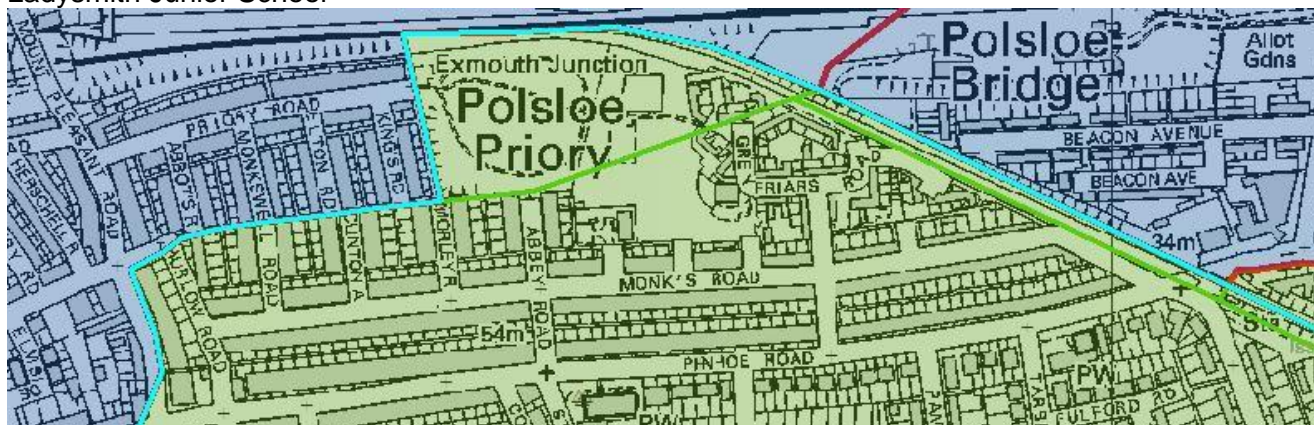
Kingskerswell Church of England Primary School



Appendix Two – Recommended catchment area amendments for Community and Voluntary Controlled schools

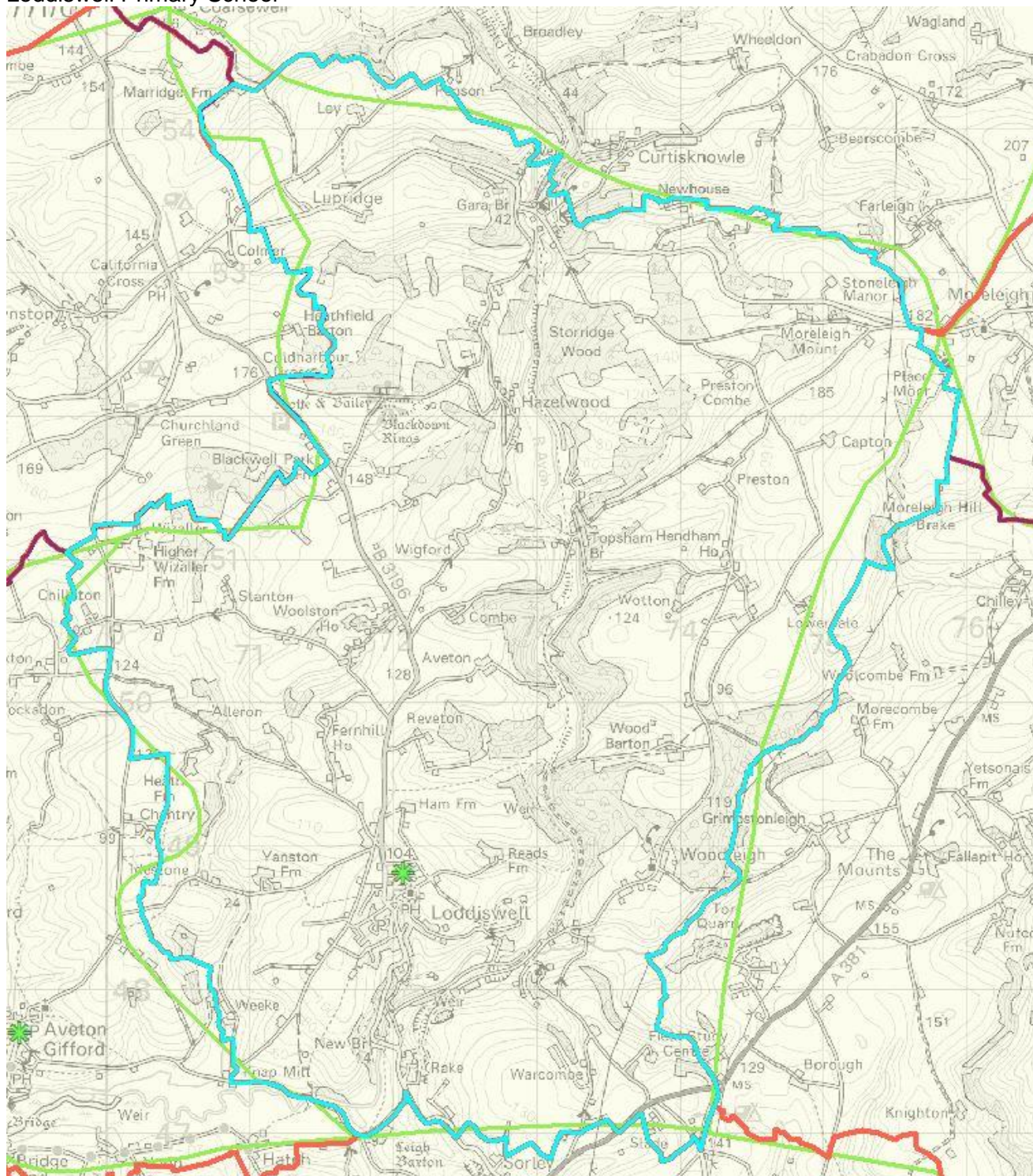
Ladysmith Infant and Nursery School

Ladysmith Junior School



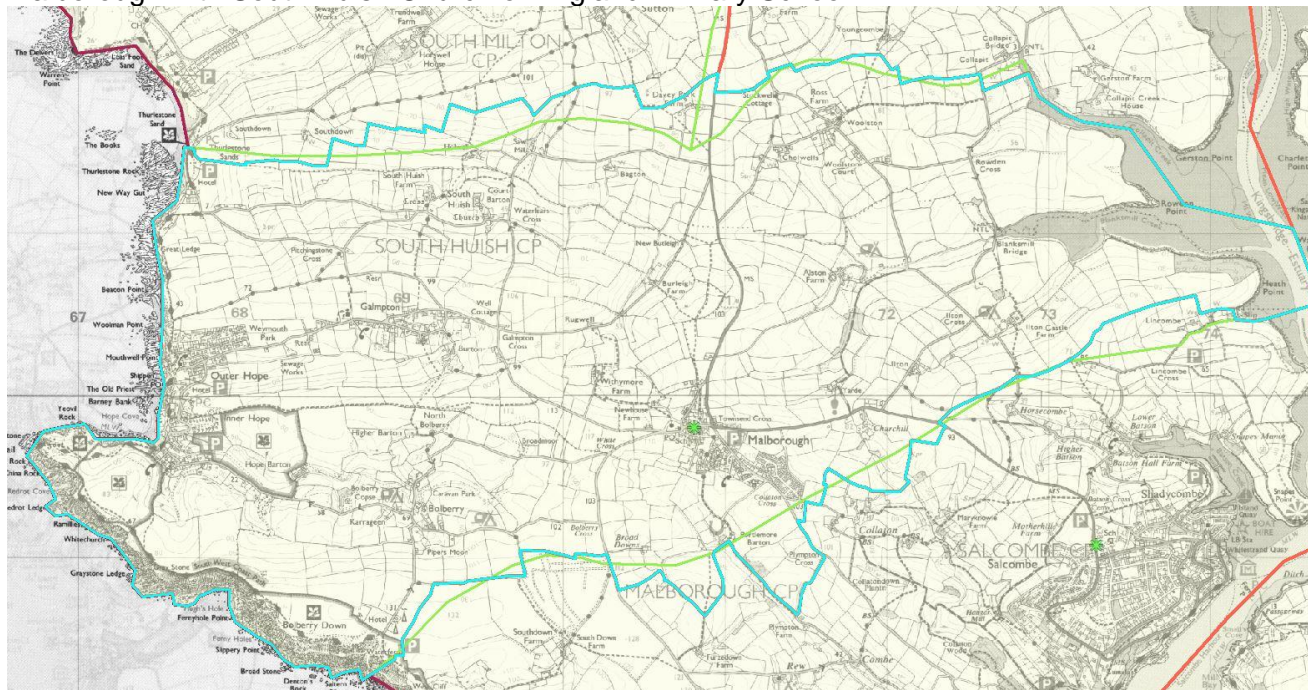
Appendix Two – Recommended catchment area amendments for Community and Voluntary Controlled schools

Loddiswell Primary School



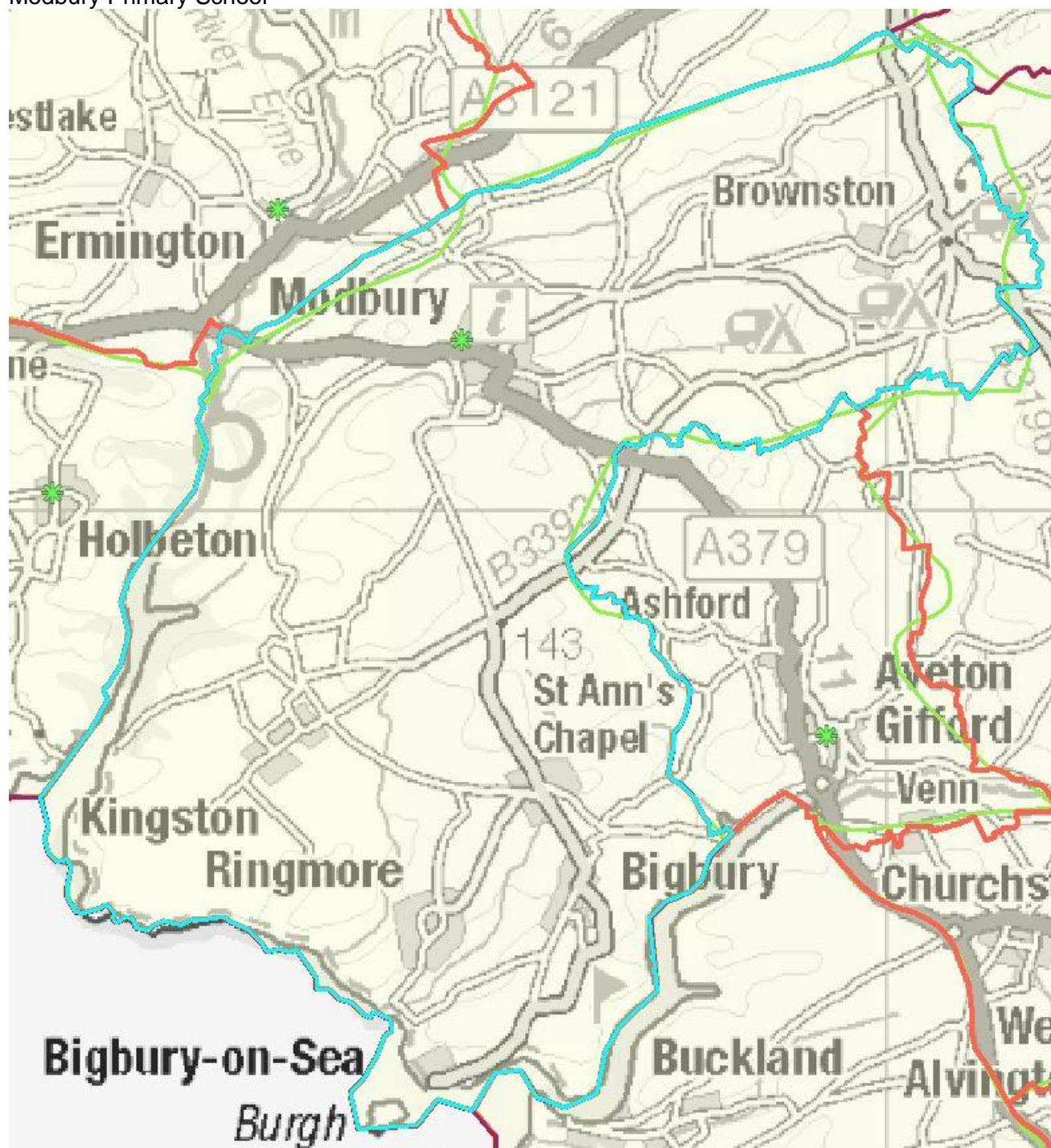
Appendix Two – Recommended catchment area amendments for Community and Voluntary Controlled schools

Malborough with South Huish Church of England Primary School



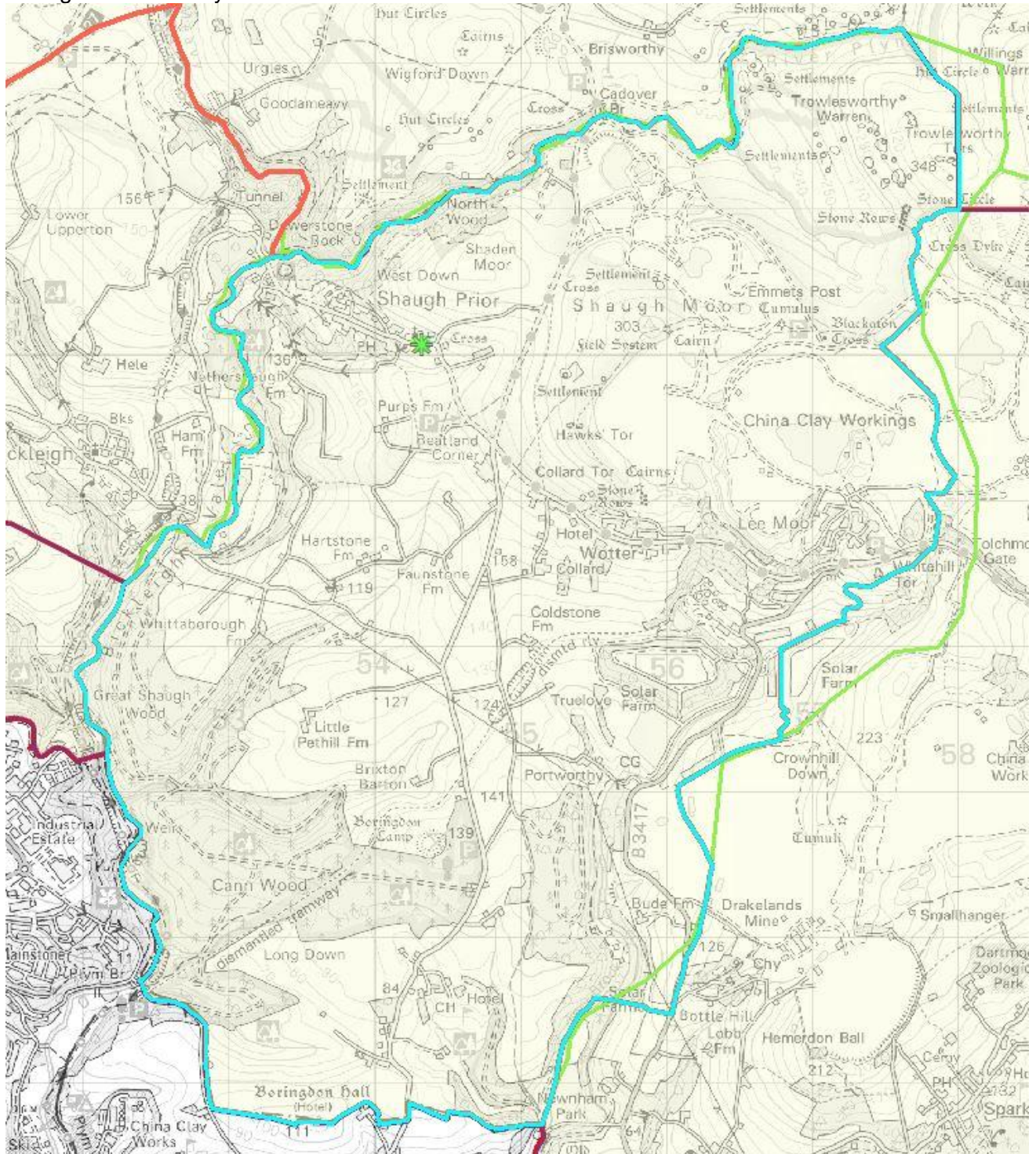
Appendix Two – Recommended catchment area amendments for Community and Voluntary Controlled schools

Modbury Primary School



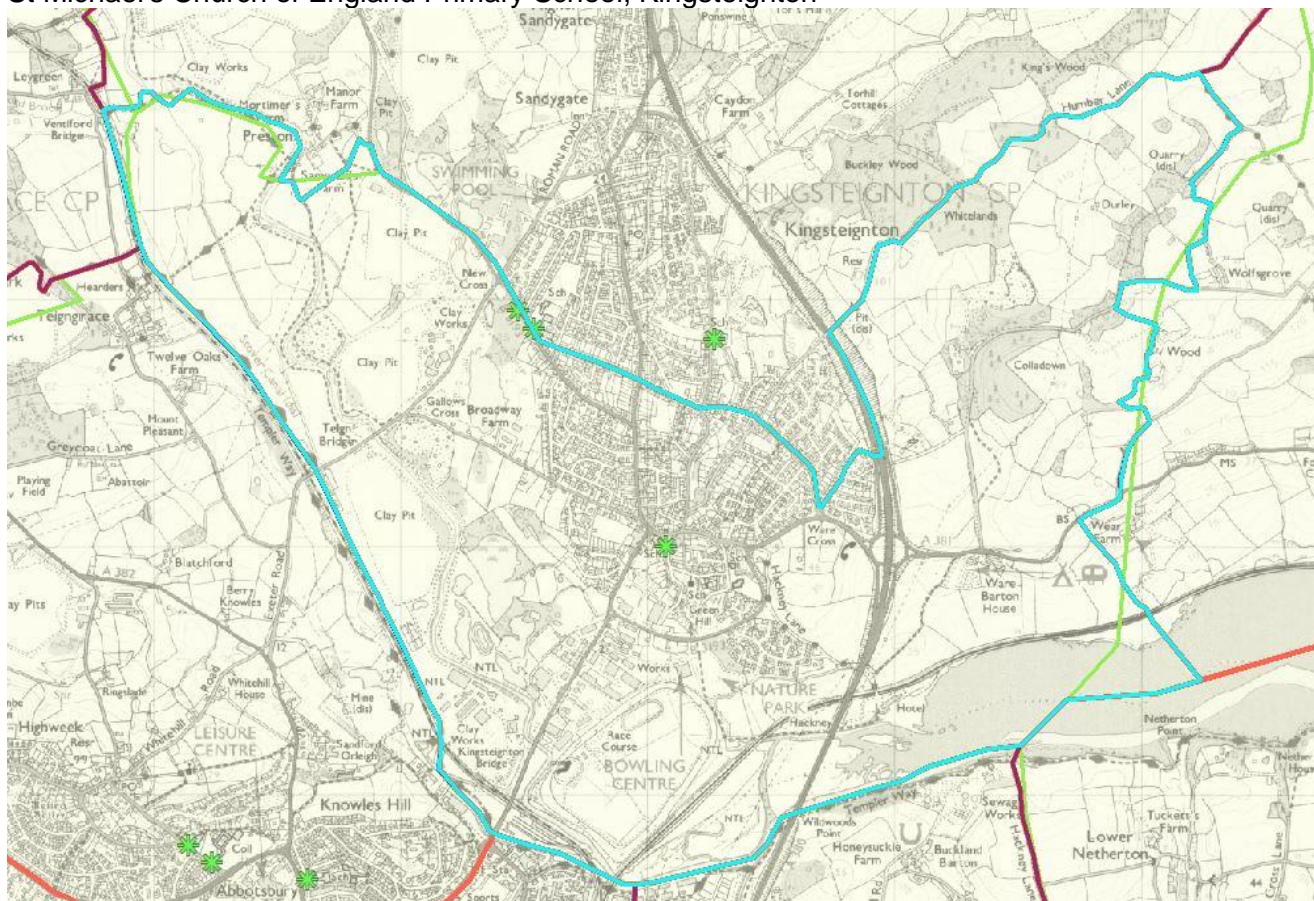
Appendix Two – Recommended catchment area amendments for Community and Voluntary Controlled schools

Shaugh Prior Primary School



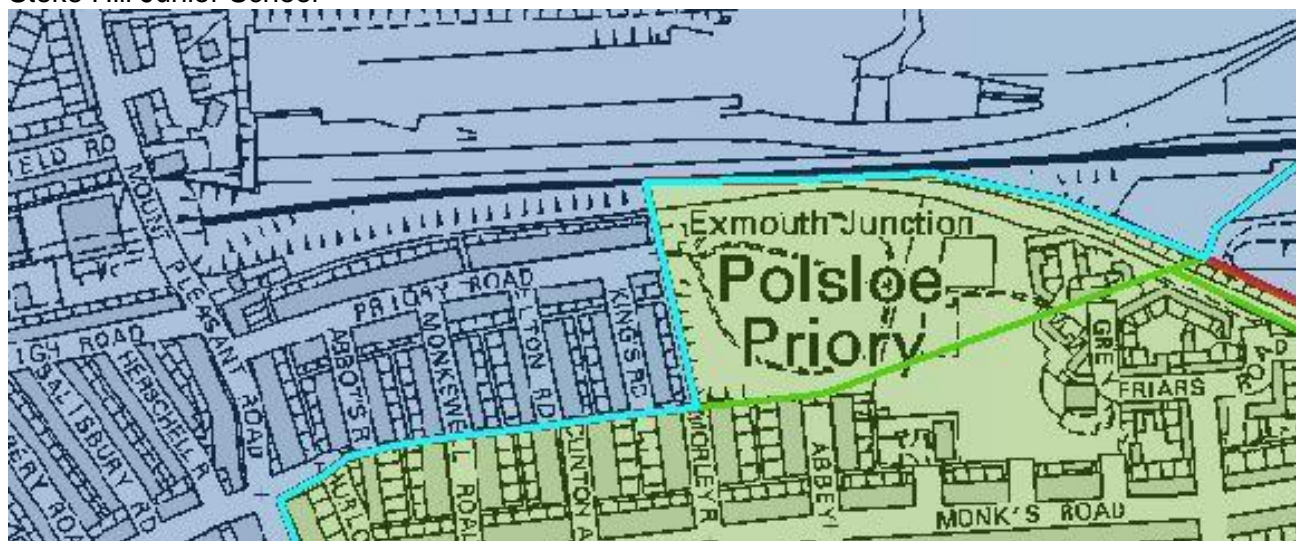
Appendix Two – Recommended catchment area amendments for Community and Voluntary Controlled schools

St Michael's Church of England Primary School, Kingsteignton



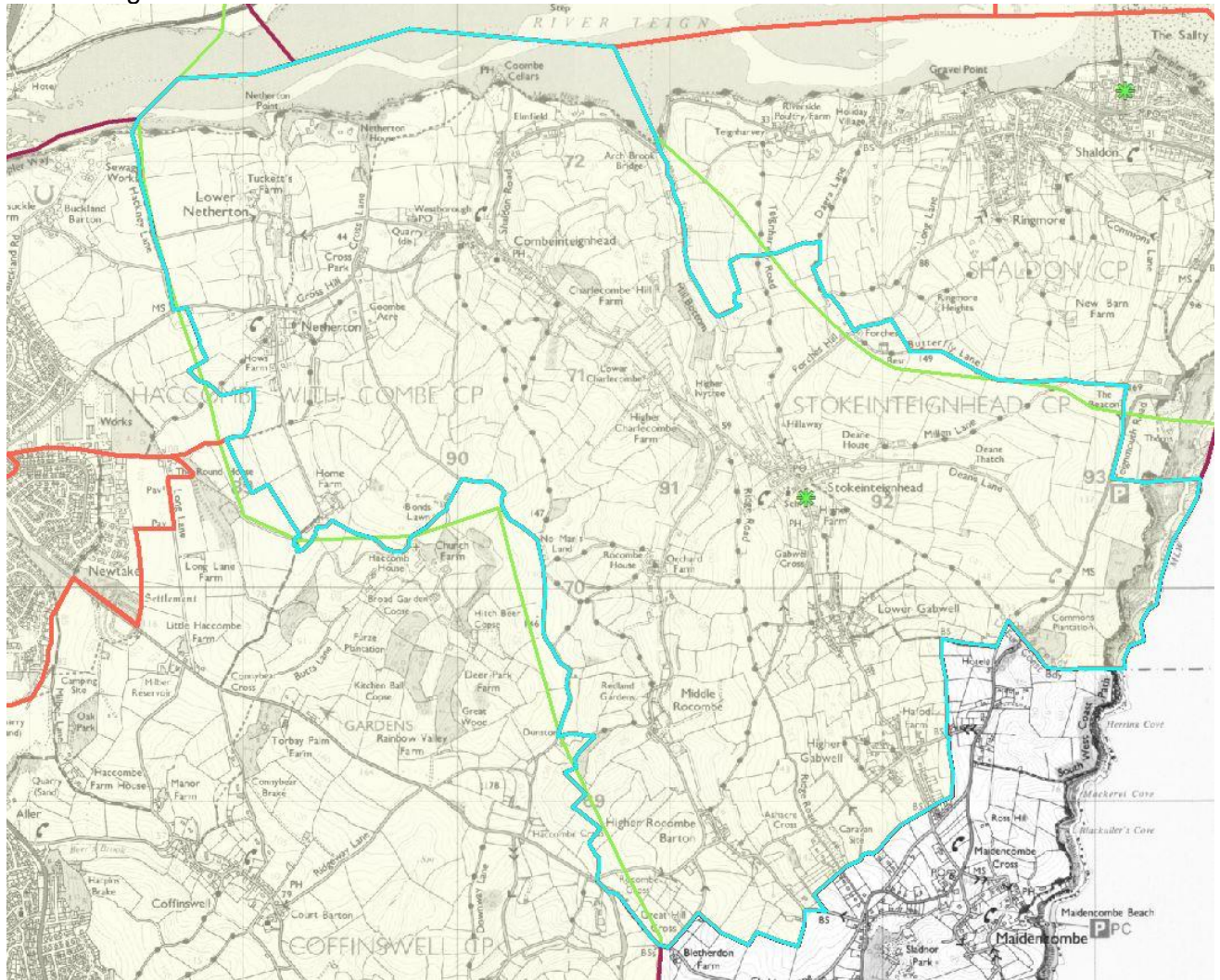
Appendix Two – Recommended catchment area amendments for Community and Voluntary Controlled schools

Stoke Hill Infant and Nursery School
Stoke Hill Junior School



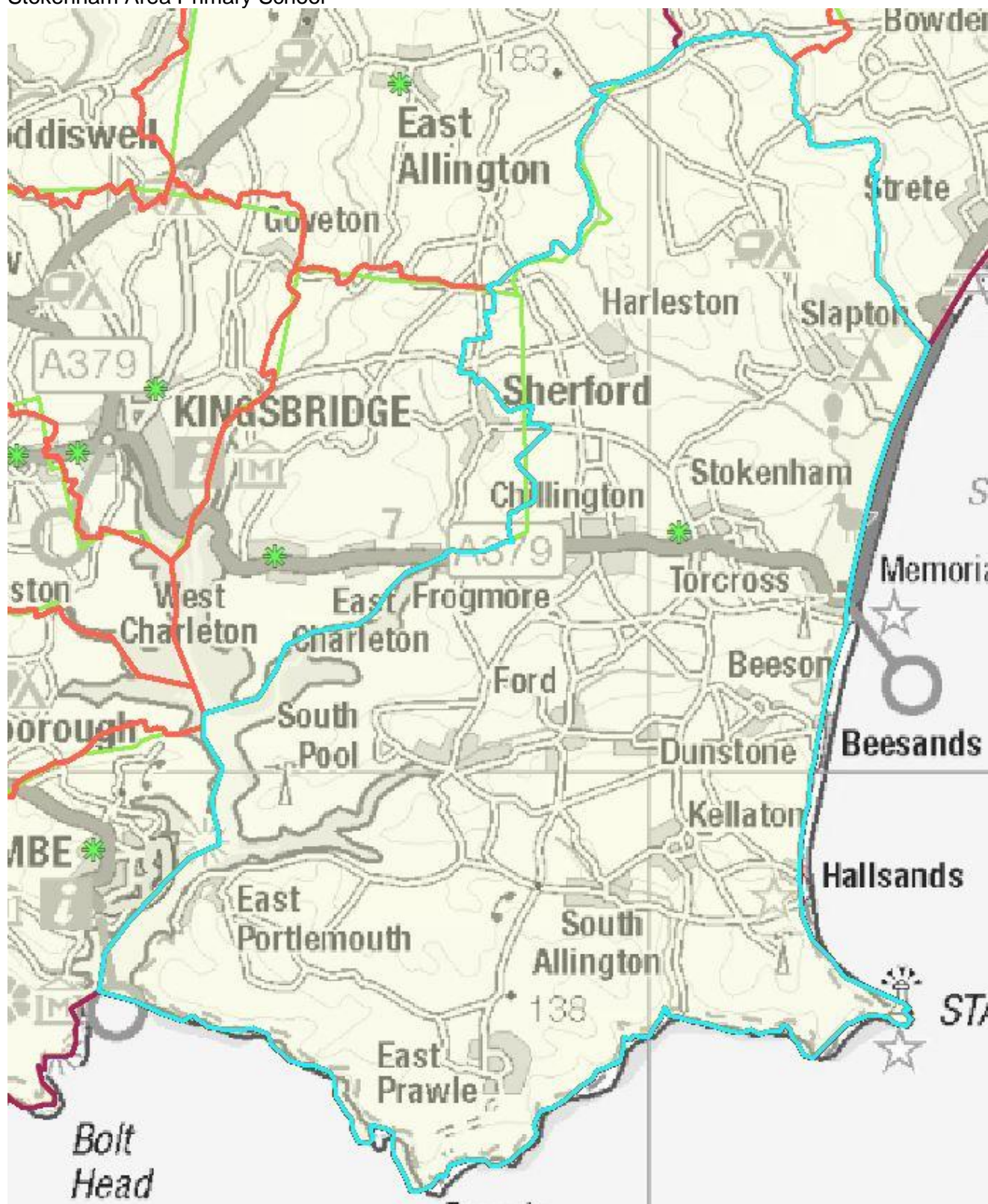
Appendix Two – Recommended catchment area amendments for Community and Voluntary Controlled schools

Stokeinteighhead School



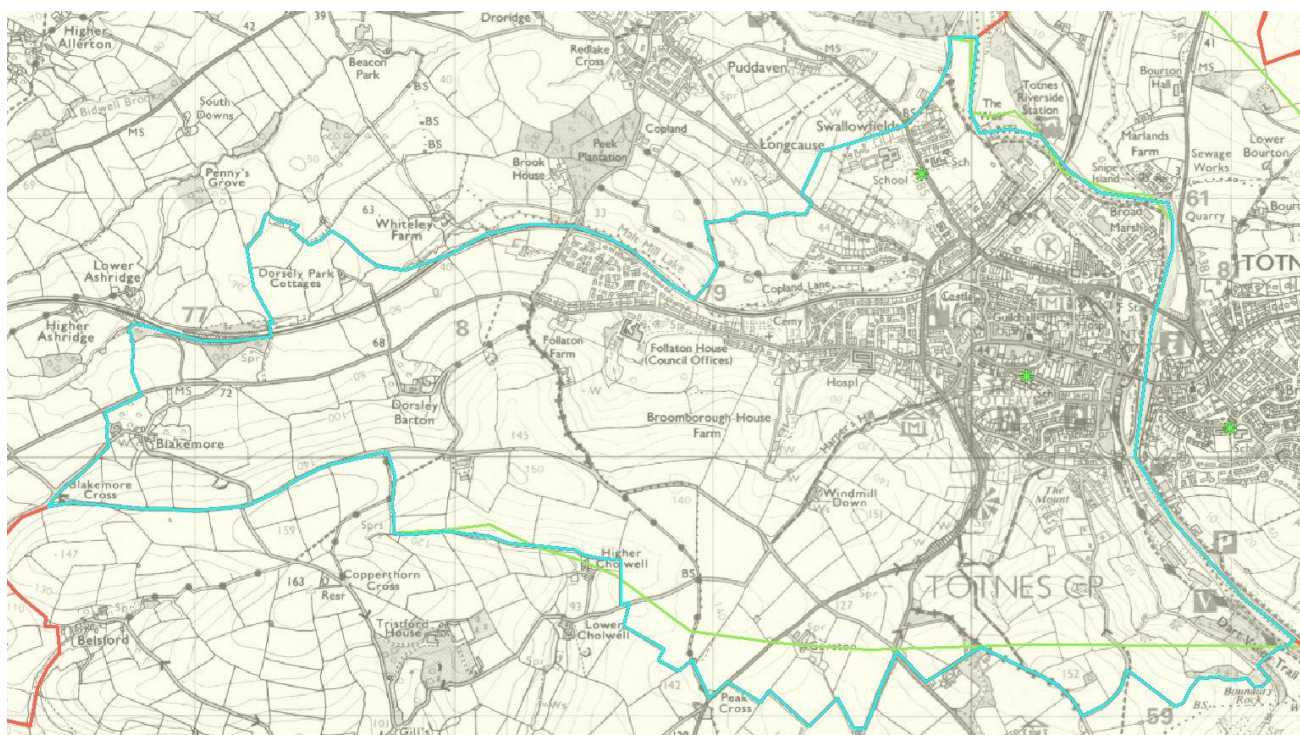
Appendix Two – Recommended catchment area amendments for Community and Voluntary Controlled schools

Stokenham Area Primary School



Appendix Two – Recommended catchment area amendments for Community and Voluntary Controlled schools

The Grove Primary School



Appendix Three – Impact of proposed catchment area map amendments

Properties at the following postcodes³ were identified as moving from one catchment area to another under the proposed amendments:

Postcode	from	To	Students' education records
TQ7 4NJ	Aveton Gifford	Modbury	nil
TQ7 4NN	Aveton Gifford	Modbury	nil
TQ7 4EN	Aveton Gifford	Loddiswell	Aveton Gifford preschool
TQ7 4EH	Aveton Gifford	Loddiswell	nil
PL21 0SE	Aveton Gifford	Loddiswell	nil
TQ9 6NJ	Berry Pomeroy	Marldon	Berry Pomeroy & Dartmouth Berry Pomeroy & Dartmouth
TQ9 6NJ	Berry Pomeroy	Marldon	nil
TQ9 6NJ	Berry Pomeroy	Marldon	nil
TQ9 6NJ	Berry Pomeroy	Marldon	nil
TQ3 1SQ	Berry Pomeroy	Marldon	nil
TQ9 6ND	Berry Pomeroy	Broadhempston	none
TQ9 6ND	Berry Pomeroy	Broadhempston	nil
TQ9 6ND	Berry Pomeroy	Broadhempston	nil
TQ9 6ND	Berry Pomeroy	Broadhempston	nil
TQ9 6ND	Berry Pomeroy	Broadhempston	nil
TQ9 6ND	Berry Pomeroy	Broadhempston	nil
TQ9 6ND	Berry Pomeroy	Broadhempston	nil
TQ9 6LE	Berry Pomeroy	Totnes St John	nil
TQ9 6LE	Berry Pomeroy	Totnes St John	nil
TQ9 6NE	Broadhempston	Berry Pomeroy	nil
TQ9 6NF	Broadhempston	Ipplepen	Berry Pomeroy & Dartmouth Landscope
TQ13 7LZ	Broadhempston	Landscope	Ivybridge Landscope & Broadhempston
TQ13 7LZ	Broadhempston	Landscope	Broadhempston pre-school & Landscope
TQ13 7LZ	Broadhempston	Landscope	Dartington
TQ9 6PD	Broadhempston	Landscope	nil
TQ9 6PD	Broadhempston	Landscope	Landscope
TQ9 6PD	Broadhempston	Landscope	nil
TQ7 2JD	Charleton	Stokenham	Stokenham Stokenham Stokenham
TQ7 2BE	Charleton	Stokenham	nil
TQ7 2BE	Charleton	Stokenham	Stokenham
TQ7 2BE	Charleton	Stokenham	nil
TQ13 0HN	Chudleigh Knighton	Rydon	nil
TQ13 0HN	Chudleigh Knighton	Rydon	nil
TQ10 9JX	Dartington	South Brent	Landscope Ugborough Ugborough pre-school Ugborough
TQ6 0HN	Dartmouth	Blackawton	nil
TQ6 0LE	Dartmouth	Stoke Fleming	nil
TQ6 0LE	Dartmouth	Stoke Fleming	Stoke Fleming pre-school

³ Property names or numbers have been removed from this view for Data Protection reasons.

Appendix Three – Impact of proposed catchment area map amendments

TQ9 7PD	Diptford	Harbertonford	Diptford & Ivybridge CC
TQ9 7LT	Diptford	South Brent	nil
TQ10 9NG	Diptford	Ugborough	nil
TQ9 7AD	East Allington	Blackawton	East Allington East Allington pre-school
PL21 9NY	Ermington	Modbury	Ermington Salcombe
PL21 9NY	Ermington	Modbury	The Erme Modbury Modbury Ermington Ermington Ermington
PL21 9NY	Ermington	Modbury	Holbeton Holbeton
PL21 9NY	Ermington	Modbury	nil
PL21 9NY	Ermington	Modbury	nil
PL21 9NY	Ermington	Modbury	Holbeton
PL21 0LL	Ermington	Ugborough	nil
PL21 0LL	Ermington	Ugborough	nil
PL21 0LD	Ermington	Ugborough	nil
PL21 0LD	Ermington	Ugborough	Independent Independent
PL21 0LD	Ermington	Ugborough	Independent Independent
PL21 0LD	Ermington	Ugborough	nil
PL21 0LD	Ermington	Ugborough	nil
PL21 0LD	Ermington	Ugborough	nil
TQ9 7LD	Harbertonford	Diptford	Diptford Diptford Diptford Blackawton & Kingsbridge CC Blackawton Blackawton & Kingsbridge CC Blackawton
TQ9 7LB	Harbertonford	Diptford	nil
TQ9 7RY	Harbertonford	the Grove	Harbertonford preschool
TQ9 7HQ	Harbertonford	Blackawton	nil
TQ9 7HQ	Harbertonford	Blackawton	nil
TQ9 7HQ	Harbertonford	Blackawton	nil
TQ9 7HQ	Harbertonford	Blackawton	nil
TQ9 7HQ	Harbertonford	Blackawton	nil
TQ9 7HQ	Harbertonford	Blackawton	nil
TQ9 7HQ	Harbertonford	Blackawton	nil
TQ9 7HQ	Harbertonford	Blackawton	nil
TQ9 7HQ	Harbertonford	Blackawton	nil
TQ9 7HQ	Harbertonford	Blackawton	nil
TQ9 7HQ	Harbertonford	Blackawton	Blackawton preschool Blackawton preschool
TQ9 7HQ	Harbertonford	Blackawton	Blackawton & Kingsbridge CC Blackawton
TQ9 7DW	Harbertonford	Blackawton	nil

Appendix Three – Impact of proposed catchment area map amendments

TQ12 5UW	Ipplepen	Broadhempston	nil
TQ7 4AJ	Kingsbridge	Aveton Gifford	nil
TQ7 4AJ	Kingsbridge	Aveton Gifford	nil
TQ7 4AJ	Kingsbridge	Aveton Gifford	nil
TQ12 5LF	Kingskerswell	Abbotskerswell	Teignmouth CS Teignmouth CS
TQ9 6AR	Landscope	Landscope	nil
TQ13 7ND	Landscope	Ashburton	Landscope & South Dartmoor
PL21 0SF	Loddiswell	Modbury	nil
PL21 0HP	Loddiswell	Diptford	nil
PL21 0HP	Loddiswell	Diptford	Modbury & Ivybridge
TQ7 4AH	Loddiswell	Aveton Gifford	nil
TQ8 8NQ	Malborough	Salcombe	nil
TQ3 1TB	Marldon	Ipplepen	Ipplepen Ipplepen
TQ3 1TB	Marldon	Ipplepen	nil
PL21 0SU	Modbury	Aveton Gifford	nil
PL21 0SU	Modbury	Aveton Gifford	nil
PL21 0SE	Modbury	Loddiswell	Aveton Gifford & Kingsbridge CC Aveton Gifford & Kingsbridge CC
TQ13 0BY	Rydon	Chudleigh Knighton	nil
TQ14 0HD	Shaldon	Stokeinteignhead	nil
TQ14 0HD	Shaldon	Stokeinteignhead	Shaldon
TQ10 9EZ	South Brent	Diptford	none none
TQ10 9LT	South Brent	Dartington	nil
TQ12 6QN	St Catherines	Rydon	nil
PL8 2LB	St Marys, Brixton	Yealmpton	nil
PL8 2LB	St Marys, Brixton	Yealmpton	nil
PL8 2LB	St Marys, Brixton	Yealmpton	nil
PL8 2LB	St Marys, Brixton	Yealmpton	nil
PL8 2LB	St Marys, Brixton	Yealmpton	nil
PL8 2LB	St Marys, Brixton	Yealmpton	nil
PL8 2LB	St Marys, Brixton	Yealmpton	nil
PL8 2LB	St Marys, Brixton	Yealmpton	nil
PL8 2LB	St Marys, Brixton	Yealmpton	nil
TQ6 0NH	Stoke Fleming	Dartmouth	nil
TQ6 0NH	Stoke Fleming	Dartmouth	nil
TQ6 0NH	Stoke Fleming	Dartmouth	nil
TQ6 0NH	Stoke Fleming	Dartmouth	nil
TQ6 0NH	Stoke Fleming	Dartmouth	nil
TQ6 0NH	Stoke Fleming	Dartmouth	nil
TQ6 0NH	Stoke Fleming	Dartmouth	nil
TQ6 0NH	Stoke Fleming	Dartmouth	nil
TQ6 0LD	Stoke Fleming	Dartmouth	Blackawton Stoke Fleming
TQ9 6PP	Stoke Gabriel	Totnes St John	EHE
TQ12 4EU	Stokeinteignhead	Kingskerswell	nil
PL21 0DP	Stowford	Ugborough	none Woodlands Park Woodlands Park
PL21 0JH	The Erme	Cornwood	nil

Appendix Three – Impact of proposed catchment area map amendments

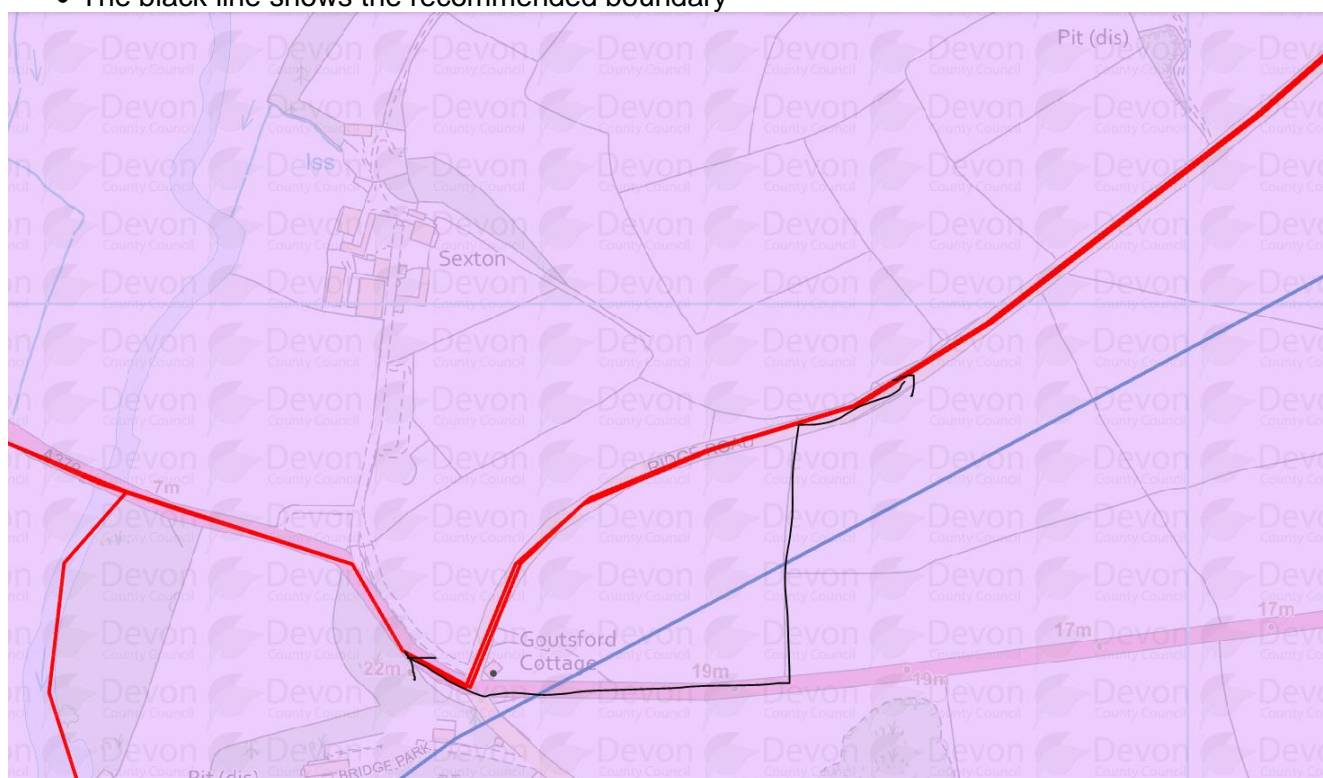
TQ9 7RZ	The Grove	Harbertonford	nil
TQ7 3EE	Thurlestone	Malborough	nil
PL21 0LL	Ugborough	Ermington	Ermington Ermington
PL21 0LL	Ugborough	Ermington	Ermington Stowford Stowford
PL21 0LL	Ugborough	Ermington	nil
PL21 0LL	Ugborough	Ermington	nil
PL21 0LL	Ugborough	Ermington	nil
PL21 0LL	Ugborough	Ermington	nil
PL21 0LL	Ugborough	Ermington	Ermington
PL9 0DF	Wembury	St Marys, Brixton	nil
	Wembury	St Marys, Brixton	nil
TQ7 3ES	West Alvington	Malborough	nil
PL21 9LB	Yealmpton	Ermington	nil
PL21 9LB	Yealmpton	Ermington	nil
PL21 9LB	Yealmpton	Ermington	Holbeton Holbeton

1. Education records were reviewed to identify where any children have attended school from that property.

2. Three responses were received:

One resident requested that the proposed change of catchment area for Ermington and Modbury be reconsidered. This request has been met in recommending to the that the revised boundary be routed around a field behind the property. Ermington's catchment is at the top and Modbury at the bottom of the map.

- The blue line shows the current boundary
- The red line shows the proposed boundary
- The black line shows the recommended boundary



Appendix Three – Impact of proposed catchment area map amendments

- One resident queried the impact of the proposed changes for Harbertonford primary on the academic year 2022. There is no impact on the arrangements for 2022-23.
- Stokenham school queried the extent of the proposed amendments and were satisfied that this was minimal.

3. Where a property moves from one catchment to another, the impact on admissions and transport will be as follows:

- Applications for admission from September 2023 will be subject to the oversubscription priority from being in / out of the new catchment area.
- Applications for admission from September 2023 for a school that is undersubscribed will be unaffected by any change to the catchment area.
- Existing transport that is provided on catchment area grounds will continue for the remainder of the child's education at the school from the same address.
- Applications for transport from September 2023 on catchment area grounds will be subject to the new catchment area.
- Applications for transport from September 2023 on nearest school grounds or on low-income grounds will be unaffected by any change to the catchment area.

4. A similar exercise is to be undertaken for the remainder of the county for 2024-25.

5. Catchment area maps for the whole of Devon can be viewed at [DCC School Designation Areas - 2023-2024 \(devon.gov.uk\)](https://www.devon.gov.uk/dcc-school-designation-areas-2023-2024). The 2023-24 proposed maps provide a view of the 2022 and 2023 maps together as above. This allows for close examination of the boundary lines, determined for 2022 and proposed, now recommended for 2023.

Appendix Four – admission arrangements timetable

Timetable for the admissions cycle for 2023-24 and 2024-25

Statutory dates are in bold.

	Action	Action by
15 January 2022	Deadline for timely applications for the normal round of admissions to primary, infant and junior schools.	Admissions service
31 January 2022	Deadline for the completion of the consultation on proposed admission arrangements	Admission Authority
28 February	All policies to be formally determined – including the date of determination in the Policy version section.	Admission Authority
28 February	Appeals timetable to be published	Admissions Service Admissions authority
1 March	National Offer Day for the normal round of admissions to secondary schools.	Admissions Service
15 March	All policies to be published on school websites All faith policies to be forwarded to Diocese All policies to be forwarded to LA Policy Officer.	Admission Authority
16 April	National Offer Day for the normal round of admissions to primary, infant and junior schools.	Admissions Service
By 15 May	Deadline for objections to the OSA	
Summer term 2022	Review content and presentation of policies for 2024-25	Admissions Service
By 1 September	All faith own admission authority schools will receive a suggested new document for consideration	Admissions Service
By 15 September	All other own admission authority schools will receive a suggested new document for consideration	Admissions Service
By 30 September	Faith schools to meet and agree a proposed policy then forward to Diocese (CE confirmed timescale)	Admission Authority
31 October	Deadline for timely applications for the normal round of admissions to secondary schools.	Admissions Service
By 31 October	Diocese to forward proposed policies to LA Policy Officer	CE Diocese Catholic Diocese (if required)
By 31 October	All other own admission authority schools to return proposed policies to LA Policy Officer	Admission authority
1 November	LA-hosted consultation live for proposed admission arrangements for 2022-23	Admissions Service
7 January 2023	LA-hosted consultation ends	Admissions Service
31 January	Deadline for the completion of the consultation on proposed admission arrangements	Admission Authority
28 February	All policies to be formally determined – including the date of determination in the Policy version section.	Admission Authority
28 February	Appeals timetable to be published	Admissions Service

Appendix Four – admission arrangements timetable

		Admissions authority
15 March	All policies to be published on school websites All faith policies to be forwarded to Diocese All policies to be forwarded to LA Policy Officer.	Admission Authority
By 15 May	Deadline for objections to the OSA	

Appendix Five – recommended amendments to the Co-ordinated Admissions Schemes

1. The policy documents can be viewed within the Co-ordinated Admissions Schemes folder at <http://devon.cc/lapolicies>:
 - Proposed 2023-24 Normal Round Admissions Scheme.
 - Proposed 2023-24 In-Year Co-ordinated Admissions Scheme
2. Amendments to wording are highlighted in red text.
3. Dates have been rolled forward for the new academic year.
4. Dates for selective testing for schools and their outcomes will be inserted when the respective policies have been determined.
5. In individual school policies, contact details for the CEAS have been updated.
6. Wording has been updated to emphasise the statutory timescale for in-year applications to be resolved. This is a maximum of 15 school days but with an aim of resolution in 10 school days.